

**nommiediesel**

Spare parts catalogue  
Catalogue de pièces détachées  
Ersatzteilkatalog  
Catálogo de piezas de repuesto  
Catalogo parti di ricambio

**4.240**

Gaüzéke

We reserve the right to carry out at any time whatsoever, without notice and without the obligation to up-date this booklet, any modifications to parts or supplies of accessories as may be deemed necessary for technical or commercial reasons.

Reproduction, multiplication or translation in full or in part is not permitted without written authorisation.

Nous nous réservons le droit d'apporter, sans préavis ni obligation de mise à jour de ce catalogue, les modifications rendues nécessaires pour des raisons techniques ou commerciales.

Les reproductions ou traductions, même partielles, sont interdites sans autorisations écrite de notre part.

Wir behalten uns vor das Recht notwendige Aenderungen einzufuehren, ohne Voranzeige und ohne Verpflichtung diese Herausgabe auf den letzten Stand zu bringen.

Nachdruck, Vervielfaeltigung oder Uebersetzung, auch auszagsweise, ist ohne schriftliche Genehmigung nicht erlaubt.

Nos reservamos el derecho de aportar, sin previo aviso ni obligación de puesta al día de este catálogo, las modificaciones necesarias por razones técnicas o comerciales.

Las reproducciones o traducciones, incluso parciales, estan prohibidas sin autorización escrita de nuestra parte.

Ci riserviamo il diritto di apportare, senza preavviso e senza l'obbligo di aggiornare questa pubblicazione, le modifiche eventualmente necessarie per qualunque necessità tecnica o commerciale.

Riproduzione, anche parziale, vietata senza nostra autorizzazione scritta.

## 1. PREFACE

1.1. For technical reasons and for simplification the illustrations in this catalogue are only by way of example.

## 2. GUIDE FOR CONSULTATION OF THE CATALOGUE

2.1. Identify in the table 00.00 «Table Index» the table to be consulted.

2.2. Every table is composed of two pages.

An enlarged view of the articles is shown on the first page.

The tables giving part numbers, quantities relating to the engine and eventual observations are shown on the second page.

## 3. RULES FOR ORDERING

3.1. All orders must be written and sent to NANNIDIESEL, Spare Parts Dept., with the following references:

- Quantities requested
- Part no.
- Number of order, method of shipment, etc.

3.2. For urgent orders or in case of doubt, it is necessary to indicate the serial number and the year of production of the engine and as much useful information possible to identify the part.

## 4. GENERAL

4.1. Any queries concerning your orders of spare parts must bear the number and date of the order and/or the number of the sales invoice.

4.2. Any complaints regarding shipments must be presented within 8 days from receipt of the goods.

4.3. Any mistakes deriving from the transmission or incorrect interpretation of urgent orders taken by telephone, telegram or telex will be chargeable to the Distributor who passed the order.

## 1. PREFACE

1.1. Pour des raisons techniques et de simplicité les illustrations de ce catalogue sont seulement fournies à titre indicatif.

## 2. METHODE DE CONSULTATION DU CATALOGUE

2.1. Rechercher sur la page 00.00 «Index des planches» le numéro de la planche à consulter.

2.2. Chaque planche est composé de 2 pages.

La première page montre la vue éclatée des pièces.

La deuxième page donne les symboles, les quantités pour moteur ainsi que les observations éventuelles.

## 3. INSTRUCTIONS POUR COMMANDES DE PIECES

3.1. Toutes les commandes doivent être adressées à NANNIDIESEL avec les éléments suivants:

- Quantité demandée
- Code de la pièce
- Numéro de commande, mode d'expédition, etc.

3.2. Pour des commandes urgentes ou en cas de doute, il est nécessaire d'indiquer le numéro de séries et l'année de fabrication du moteur ainsi que un maximum d'informations permettant d'identifier la pièce.

## 4. GENERALITES

4.1. Tout renseignement concernant votre commande de pièces détachées doit comporter le numéro et la date de la commande et/ou le numéro et la date de la facture de vente.

4.2. Toute réclamation concernant l'expédition doit être faite sous 8 jours à dater de la réception de la commande.

4.3. Toute erreur découlant de l'expédition ou d'une mauvaise interprétation d'une commande urgente enregistrée par téléphone, télégramme ou télex sera à la charge du distributeur qui a passé la commande.

## 1. VORREDE

1.1. Die Bilder dieses Katalogs sind nur illustrativ.

## 2. LEITUNG FUER KATALOGKONSULTIERUNG

2.1. Suchen Sie auf Seite 00.00 «Tabelleverzeichnis» die benötigte Tabelle.

2.2. Jede Tabelle hat zwei Seiten. Die erste Seite zeigt den vergrößerten Querschnitt der Teile.

Die zweite zeigt Katalognummer, Menge und eventuelle Bemerkungen.

## 3. ANWEISUNG FUER ERSATZTEILBESTELLUNGEN

3.1. Bestellungen bitte getippt adressiert an NANNIDIESEL, Ersatzteilabteilung, mit Angabe von:

- Quantität
- Ersatzteilkode
- Auftragsnummer, Versandweg usw.

3.2. Für dringende Bestellungen oder im Zweifelsfall, geben Sie immer Motornummer und Herstelljahr an und alle mögliche Informationen um den Teil zu identifizieren.

## 4. ALLGEMEINE

4.1. Jede Anfrage, die sich auf Ihre Ersatzteilbestellung bezieht, soll immer Bestellnummer, Bestelldatum und/oder Rechnungsnummer angeben.

4.2. Reklamationen die sich auf Sendungen beziehen, sollen max. 8 Tage nach Erhalt der Ware zugesandt werden.

4.3. Fehler, verursacht von nicht richtigen Daten, im Falle einer dringenden Bestellung per Telefon oder Fernschreiben, sind dem Vertreter, welcher den Auftrag erteilt hat, zuzuschreiben.

## 1. PREFACIO

1.1. Por razones técnicas y de simplicidad las ilustraciones de este catálogo se facilitan únicamente a título indicativo.

## 2. METODO DE CONSULTA DEL CATALOGO

2.1. Buscar en la página 00.00 «Índice de las laminas», el número de la lamina a consultar.

2.2. Cada lamina se compone de 2 páginas. La primera página muestra una vista del despiece. La segunda página da las referencias, las cantidades por motor así como las observaciones eventuales.

## 3. INSTRUCCIONES PARA PEDIR LAS PIEZAS

3.1. Todos los pedidos deben ser dirigidos a NANNIDIESEL con los elementos siguientes:

- Cantidad pedida
- Código de la piezas
- Número de pedido, forma de expedición etc.

3.2. Para pedidos urgentes o en caso de duda, es necesario indicar el número de serie del motor y el año de fabricación así como el máximo posible de información lo cual permita identificar las piezas.

## 4. GENERALIDADES

4.1. Toda información o todo dato acerca de su pedido de piezas de recambio debe llevar el número y la fecha de pedido y/o el número y la fecha de la factura de venta.

4.2. Toda reclamación relativa a la expedición debe ser realizada en los 8 días a contar desde la fecha de recepción del pedido.

4.3. Todo error procedente de la expedición o de la mala interpretación de un pedido urgente realizado por teléfono, telegrama o telex será a cargo del distribuidor que ha pasado dicho pedido.

## 1. PREFAZIONE

1.1. Per motivi tecnici e di semplificazione le illustrazioni del presente catalogo sono puramente indicative.

## 2. GUIDA PER LA CONSULTAZIONE DEL CATALOGO

2.1. Identificare nella tabella 00.00 «Indice delle tavole» la tabella da consultare.

2.2. Ogni tavola è composta da due facciate.

Sulla prima facciata è rappresentata la vista esplosa dei particolari.

Sulla seconda facciata sono rappresentate le tabelle con i codici di ordinazione, le quantità riferite al motore e le eventuali osservazioni.

## 3. NORME PER LE ORDINAZIONI.

3.1. Tutte le ordinazioni devono essere dattiloscritte ed inviate alla NANNIDIESEL — Servizio Ricambi — con i seguenti riferimenti:

- Quantità di richiesta
- Codice del pezzo
- Numero di ordine, modalità di spedizione, etc.

3.2. Per gli ordini urgenti o in caso di dubbio è necessario indicare il numero di matricola e l'anno di produzione del motore ed il maggiore numero di dati utili all'identificazione del ricambio.

## 4. GENERALITÀ

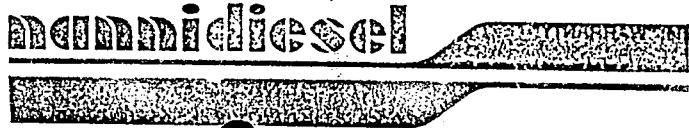
4.1. Ogni domanda di chiarimento riguardante Vostre ordinazioni di parti di ricambio deve indicare il numero e la data dell'ordine e/o il numero della fattura di vendita.

4.2. I reclami riguardanti le spedizioni devono essere presentati entro 8 giorni dalla data di ricevimento della merce.

4.3. Gli errori che deriveranno dalla trasmissione o interpretazione non esatta di dati, in caso di ordini urgenti a mezzo telefono, telegramma o telex, saranno imputabili al Concessionario che avrà trasmesso l'ordine.

DESCRIPTION	GROUP NO.	DESCRIPTION	GROUP NO.	DESCRIPTION	GROUP NO.
CRANK CASE/CYLINDERS	01.00	ELECTRIC STOP	76.00		
OIL PAN- OIL PUMP	01.01	FLY-WHEEL HOUSING	80.00		
CYLINDER HEAD COVER	05.00	GEARBOX, OIL COOLER	81.00		
CYLINDER HEAD	09.00	REVERSING GEAR	82.00		
TIMING GEAR - CAMSHAFT	11.00	WATER TANK	89.00		
TIMING GEAR - CAMSHAFT	11.01	TOOLS - GASKET SET	90.00		
SPEED CONTROL	14.00	ENGINE MOUNT	91.00		
CRANKSHAFT PISTONS	15.00	ENGINE MOUNT V.DRIVE	91.01		
INJECTION & FUEL PUMP	21.00	ENGINE MOUNT S.D.	91.02		
INJECTION LINES NOZZLES	22.00	SPARE PARTS KIT	95.00		
FUEL FILTER ASSY.	23.00				
OIL FILTER ASSY.	31.00				
WATER PUMP	40.00				
HEAT EXCHANGER EXH. MANIFOLD	46.00				
SEA WATER PUMP ASSY.	47.00				
SEA WATER PUMP	47.01				
OIL COOLER	49.00				
INTAKE MANIFOLD	51.00				
STARTER MOTOR	70.00				
ALTERNATOR ASSY. STD.	73.00				
INSTRUMENT PANEL LXP.	74.01				
INSTRUMENT PANEL LXP.	75.01				

INDEX 00.00



GROUP DESCRIPTION 00.00

000009

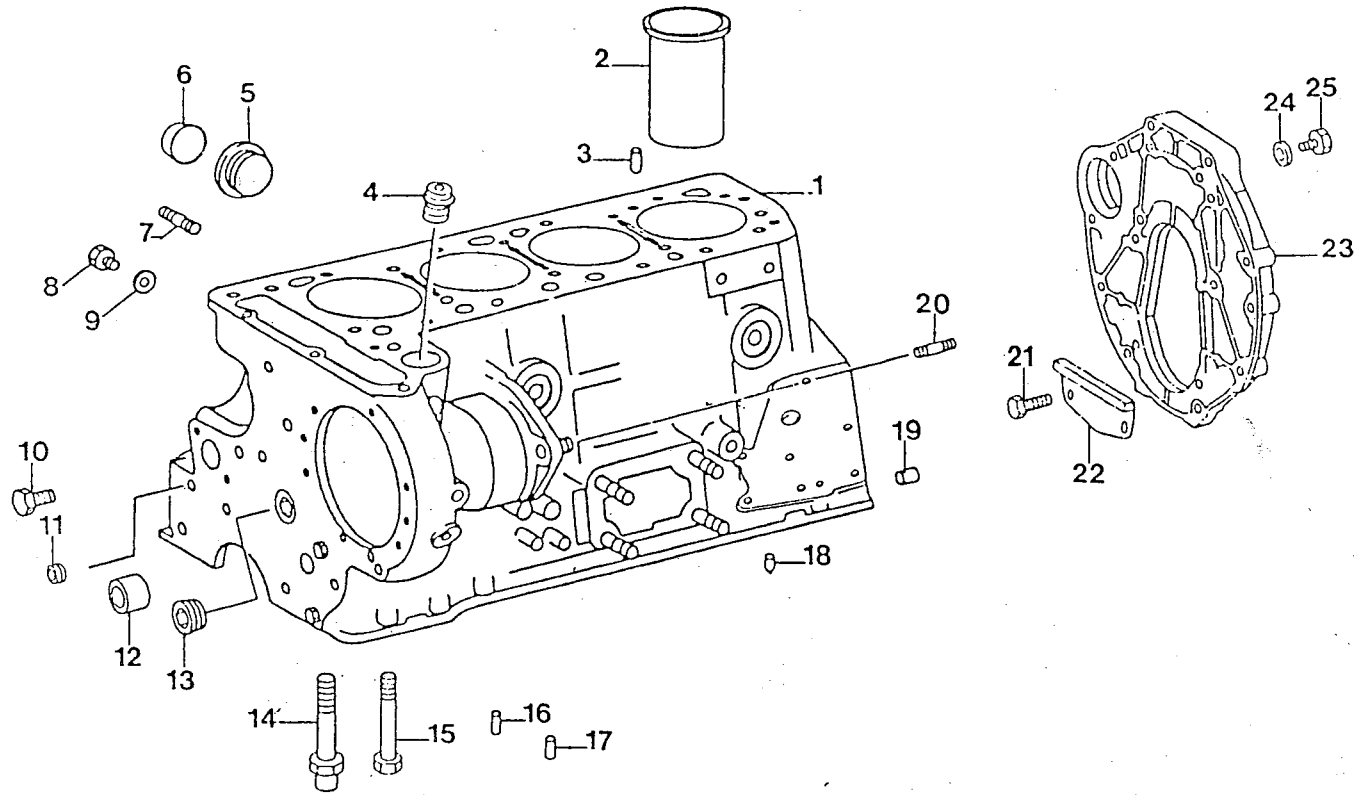
DATE

CATALOGUE FOREWORD SYMBOLS

#	!	OBSOLETE
>	!	REPLACED BY
&	!	REPLACE TOGETHER WITH .....
&—s	!	REPLACE TOGETHER WITH ..... AND MINOR PARTS
A	!	ACCESSORY
[USA]	!	ONLY FOR U.S.A.
*	!	SEE REMARKS
%	!	SPECIAL EXCHANGE CONDITIONS
Λ	!	WHEN REQUIRED
	!	COMMERCIAL
	!	SPORT
>I...	!	UP TO ENGINE NUMBER .....
I<...	!	FROM ENGINE NUMBER .....

01.00

010009



ITEM PART.N QTY D E S C R I P T I O N

REMARKS

ITEM PART.N QTY D E S C R I P T I O N

REMARKS

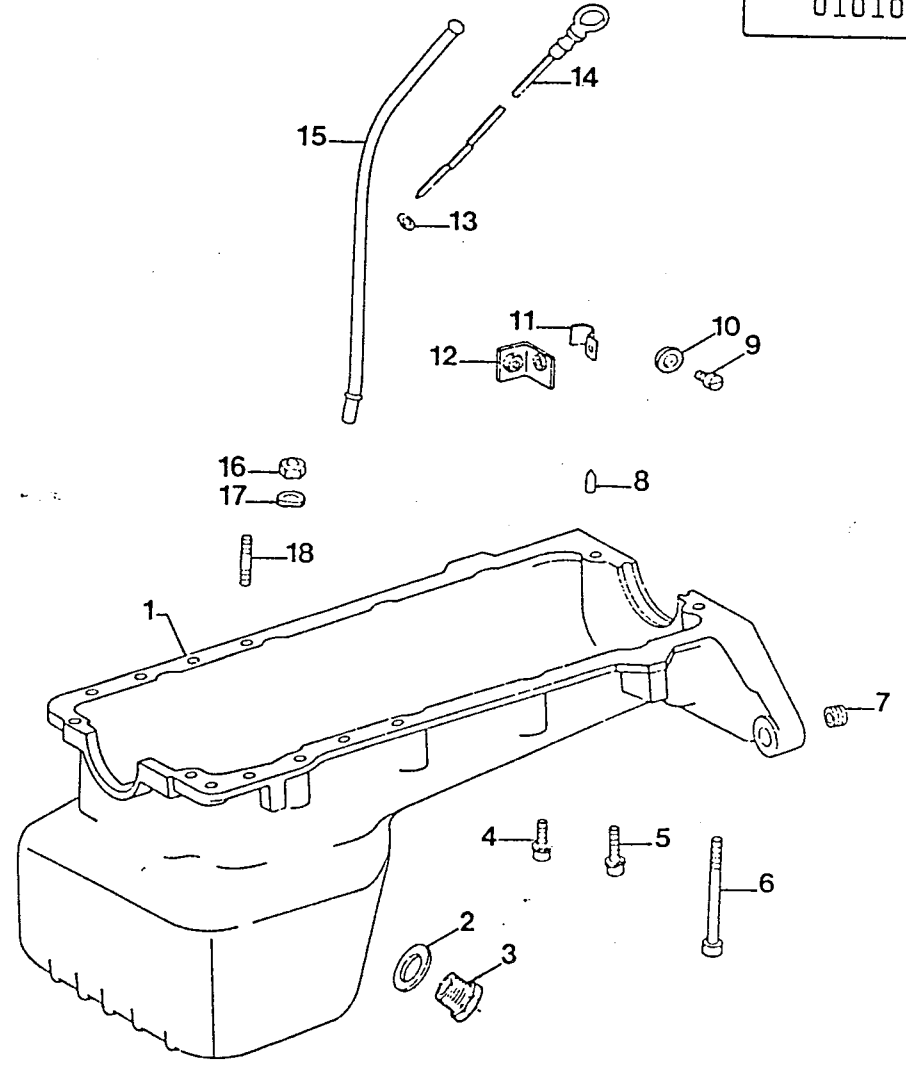
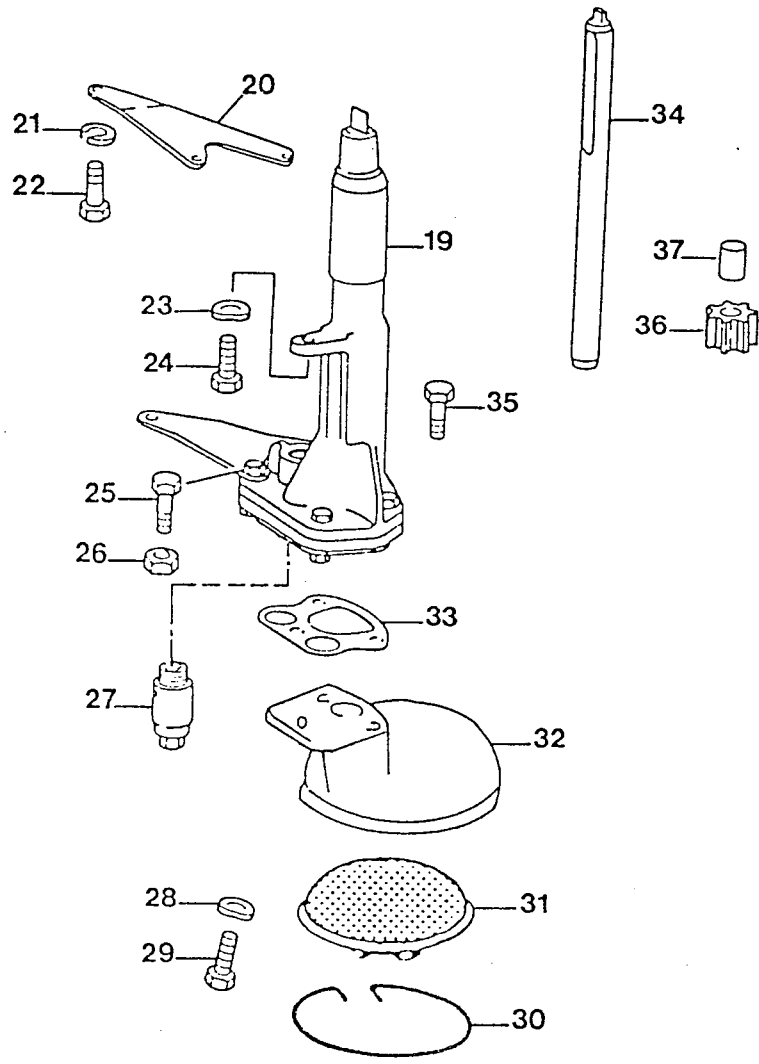
1	303704	1	CRANKCASE, 4.240
2	610102	4	LINER, CYLINDER
3	303433	2	PIN, CYLINDRICAL
4	303428	1	BEARING
5	303709	1	PLUG, SCREW
6	303410	5	PLUG, EXPANTION
7	303705	2	STUD
8	303706	1	PLUG
9	303425	1	RING, SEAL
10	303423	2	BOLT
11	303179	1	PLUG, SOCK
12	303427	1	BUSHING
13	303430	1	PLUG
14	303707	1	BOLT
15	303379	9	BOLT
16	600110	5	PIN, CYLINDRICAL
17	303414	5	PIN, CYLINDRICAL
18	303024	1	PIN
19	303417	2	PIN, DOWEL
20	303420	3	STUD
21	303713	2	BOLT
22	303712	1	PLATE, PROTECTIVE
23	303708	1	FLANGE, FLYWHEEL HOUSING
24	303710	4	WASHER
25	303711	4	BOLT

! ENGINE TYPE !
! 4.240 !
! DATE !
! 21/04/88 !

! GROUP DESCRIPTION	01.00	! PAG. !
! CRANKCASE/CYLINDERS		! 010009 !

01.01

010109





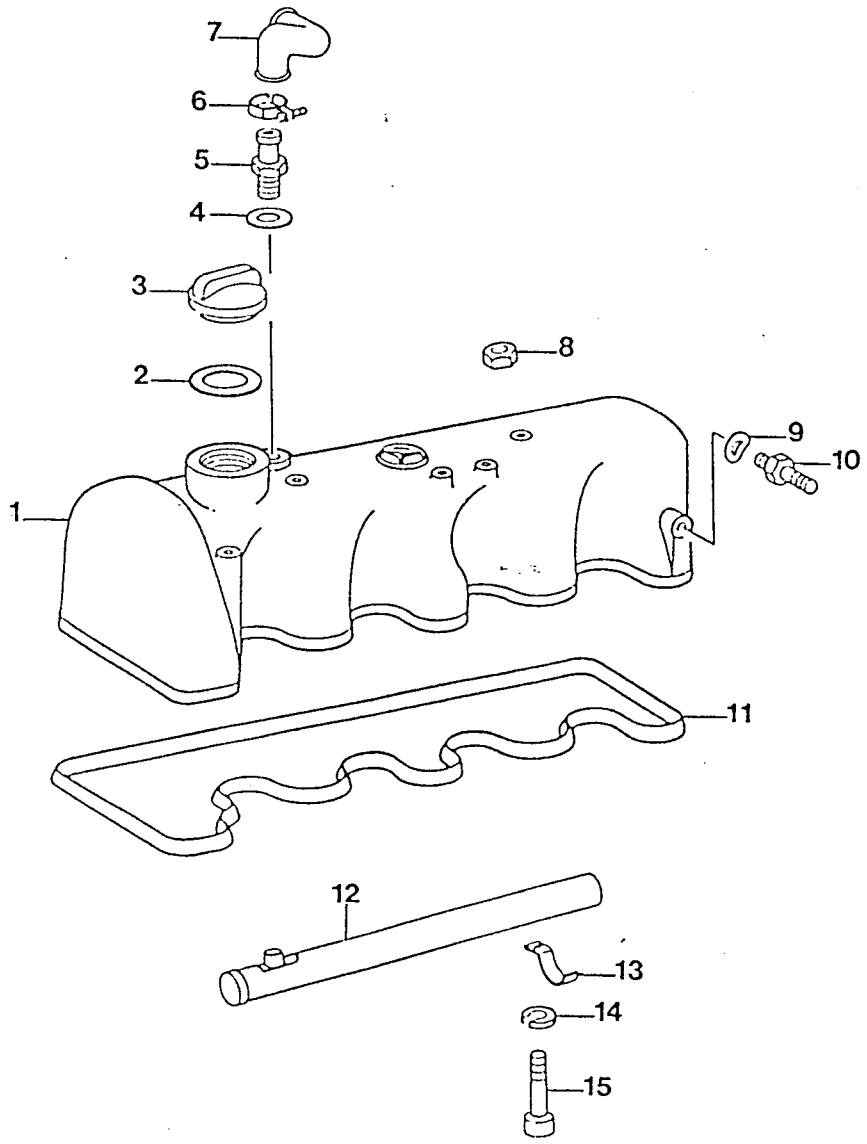
ITEM	PART.N	QTY	D E S C R I P T I O N	REMARKS	ITEM	PART.N	QTY	D E S C R I P T I O N	REMARKS
610149		1	PAN, OIL CPL		34	302224	1	SHAFT, DRIVE OIL PUMP	
300151		1	RING, SEAL		35	303510	2	BOLT	
849303		1	NIPPLE, REDUCTING M/F M26X14		36	302225	1	GEAR, OIL PUMP	
439910		16	BOLT, HEX M 6X 16		37	303501	1	SHAFT, OIL PUMP	
303487		2	BOLT, COMBINATION						
303490		2	BOLT						
303483		2	INSERT, THREADED						
303024		1	PIN						
302222		1	BOLT						
302221		1	WASHER						
302220		1	CLAMP, GUIDE TUBE						
302219		1	BRACKET, GUIDE TUBE						
302223		1	RING, SEAL						
610115		1	DIPSTICK, OIL LEVEL 4.240						
302218		1	GUIDE, TUBE OIL DIPSTICK 4.2						
302217		2	NUT						
302216		4	WASHER						
303420		2	STUD						
613101		1	PUMP, OIL CPL. 4.240						
303503		1	BRACKET						
303790		1	WASHER, LOCK						
302231		1	BOLT, M 8X 16						
498007		1	WASHER, SPRING						
302230		1	BOLT, M 8X 18						
302227		2	BOLT, M 6X 62						
302229		2	NUT						
303507		1	VALVE, PRESSURE RELIEF						
302228		5	WASHER, SPRING						
302226		1	BOLT, M 6X 22						
613105		1	CIR-CLIP						
613104		1	FILTER, ELEMENT						
613103		1	HOUSING, OIL FILTER						
613106		1	GASKET						

! ENGINE TYPE !  
! 4.240 !  
! DATE !  
! 21/04/88 !

! GROUP DESCRIPTION 01.01 !  
! OIL PAN - OIL PUMP !  
! PAG. !  
! 010109 !

05.00

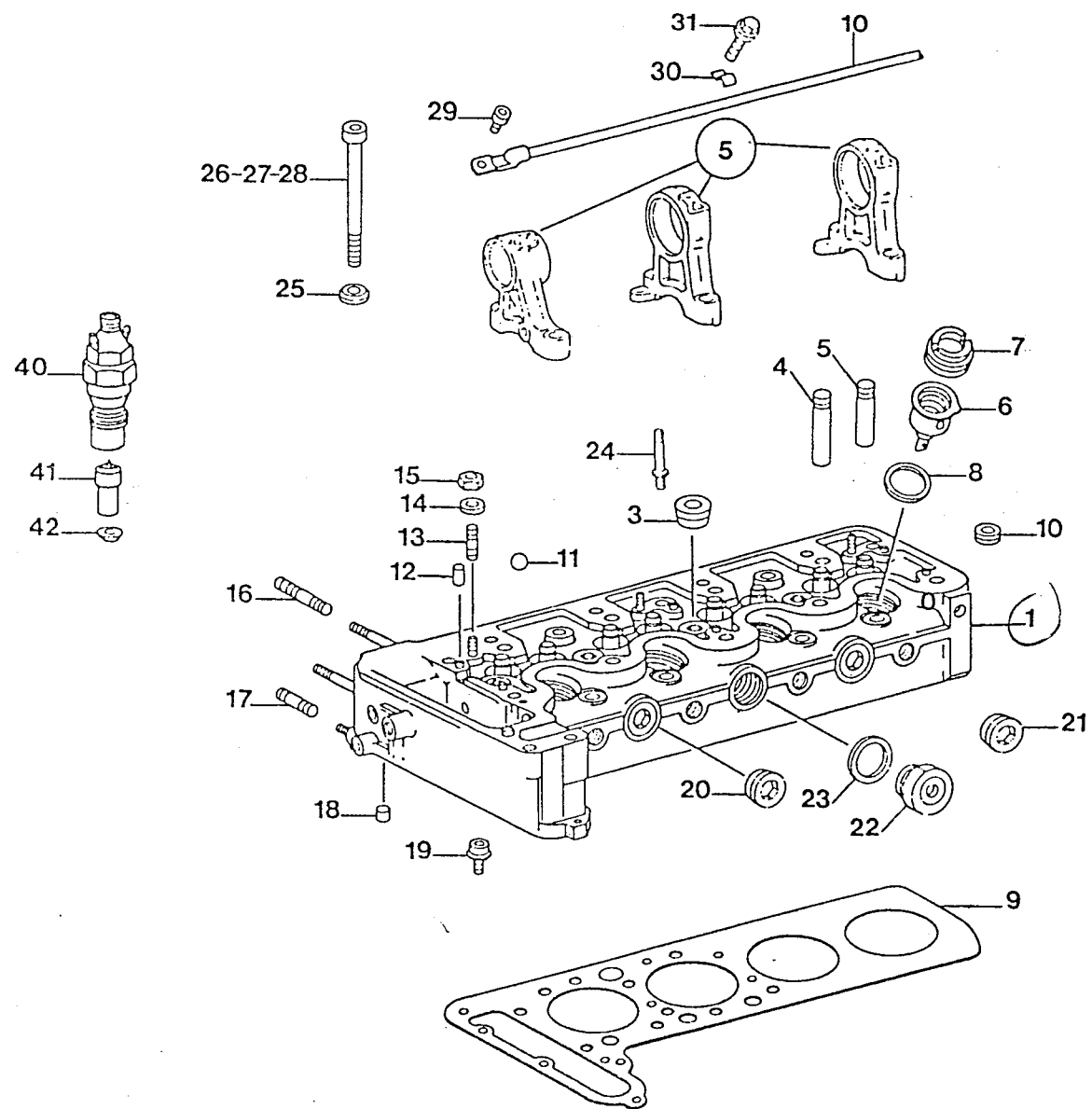
050009





09.00

090009



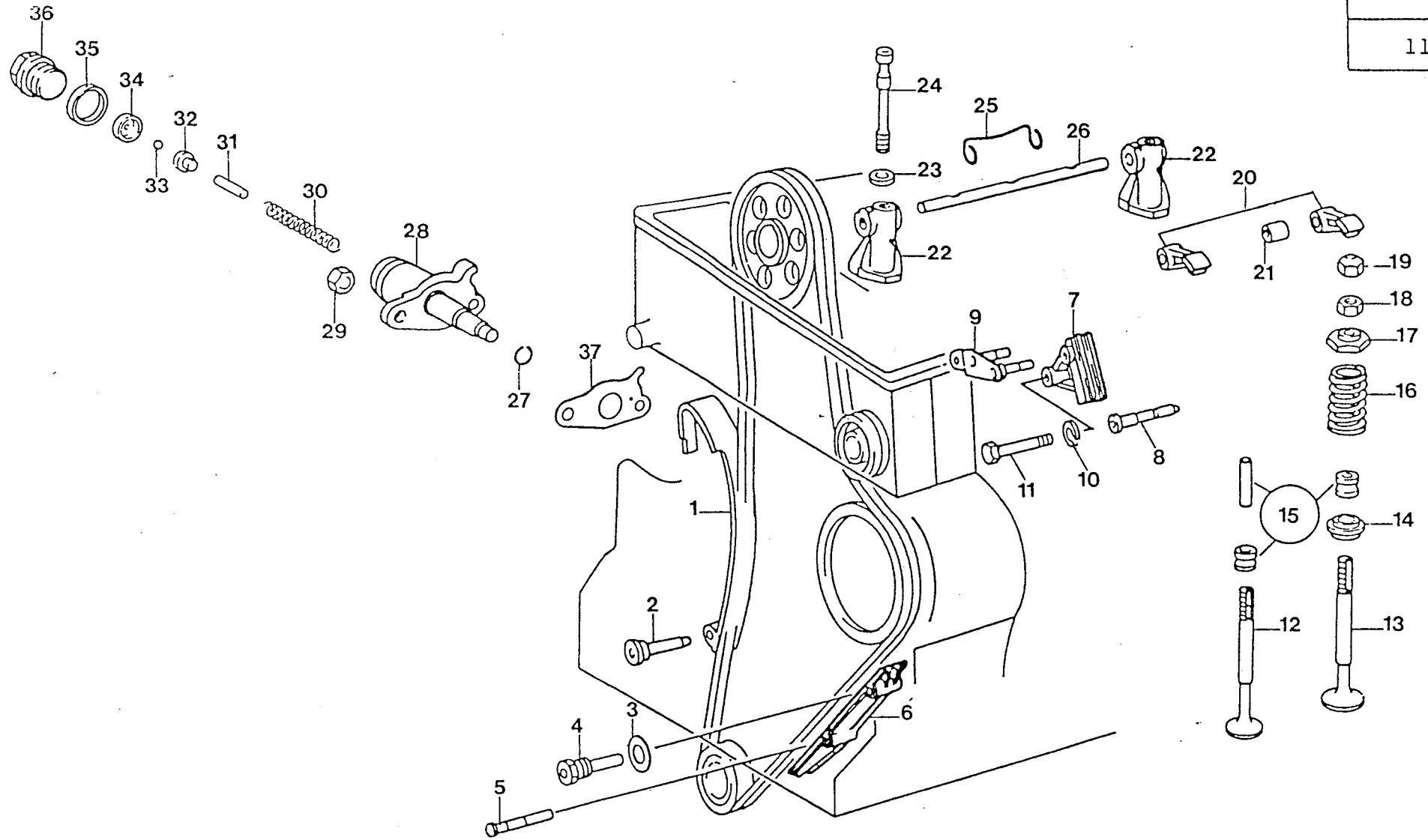
ITEM PART.N QTY D E S C R I P T I O N      R E M A R K S      I T E M P A R T . N Q T Y D E S C R I P T I O N      R E M A R K S

1	610901	1	HEAD, CYLINDER 4.24	906 30006	!	34	303457	4	RING, SEAL REP: SIZE 2 2.3MM	ITEM 8	
2	610903	3	PLUG, SOCK		!	35	303458	4	RING, SEAL REP: SIZE 3 2.3MM	ITEM 8	
3	610908	4	GUIDE, VALVE INTAKE 14.00MM		!	36	302209	4	GUIDE, VALVE INTAKE 14.00MM	ITEM 3	
4	610909	4	GUIDE, VALVE EXHAUST 14.00MM		!	37	610910	4	GUIDE, VALVE INTAKE 14.20MM	ITEM 3	
5	610912	1	BEARING, CAMSHAFT STD.		!	38	302261	4	GUIDE, VALVE EXHAUST 14.08MM	ITEM 4	
6	610927	4	PRECHAMBER, CYL. HEAD		!	39	610911	4	GUIDE, VALVE EXHAUST 14.20MM	ITEM 4	
7	610928	4	COLLAR, SCREW		!	40	612153	4	NOZZLE, HOLDER BOSCH 4.240		
8	610929	4	RING, PRE-CHAMBER 2MM		!	41	612151	4	NOZZLE, INJECTOR BOSCH 4.240		
9	303797	1	GASKET, CYL:HEAD 4.240		!	42	602156	4	RING, SEAL INJ/NOZZLE		
10	610974	1	TUBE, OIL		!	43	632153	4	INJECTOR, CPL. 4.240-5.300/T	40 ↑ 41	
11	303439	4	BALL		!						
12	303440	6	PIN, CYLINDRICAL		!						
13	303441	3	STUD		!						
14	302259	3	WASHER		!						
15	498006	3	NUT		!						
16	303446	5	STUD		!						
17	303447	1	STUD		!						
18	303449	1	PLUG		!						
19	303475	2	BOLT		!						
20	303115	1	PLUG, CYL. HEAD M30X1,5		!						
21	303115	1	PLUG, CYL. HEAD M30X1,5	970 300 981	!						
22	303451	1	FITTING, TEMP: SWITCH-CYL:HEA	MC106A	!						
23	303450	1	RING, SEAL		!						
24	303337	4	STUD		!						
25	303471	18	WASHER		!						
26	303472	6	BOLT		!						
27	303473	8	BOLT		!						
28	303474	4	BOLT		!						
29	302263	1	BOLT, SOCK		!						
30	302264	2	CLAMP		!						
31	303478	2	BOLT, COMBINATION		!						
32	302262	1	BEARING, CAMSHAFT REP: SIZE 0	ITEM 5	!						
33	303456	4	RING, SEAL REP: SIZE 1 2.3MM	ITEM 8	!						

!	E N G I N E	T Y P E	!	!	G R O U P D E S C R I P T I O N	09.00	!	P A G .	!
!	4.240		!	!	CYLINDER HEAD		!	090009	!
!	D A T E		!	!			!		!
!	22/04/88		!	!			!		!

11.00

110009



ITEM PART.N QTY D E S C R I P T I O N      R E M A R K S      I T E M P A R T . N Q T Y D E S C R I P T I O N      R E M A R K S

1 611115 1 GUIDE,V-BELT  
 2 611118 1 PIN,GUIDE V-BELT  
 3 303601 1 RING,SEAL  
 4 611120 1 BOLT  
 5 611119 3 PIN,SLIDING RAIL  
 6 611122 1 RAIL,SLIDING CHAIN GUIDE  
 7 611131 1 RAIL,SLIDING (TIMING)  
 8 611132 1 BOLT  
 9 611133 1 SUPPORT,SLIDING RAIL  
 10 302239 1 WASHER  
 11 302240 1 BOLT  
 12 611155 4 VALVE,EXHAUST  
 13 611156 4 VALVE,INTAKE  
 14 303581 8 ROTATOR,VALVE  
 15 302248 1 SEAL,VALVE STEM REP:KIT  
 16 611158 8 SPRING,VALVE  
 17 611159 8 NUT,SPRING RETAINER  
 18 611160 8 NUT,VALVE ADJ.  
 19 611161 8 NUT,VALVE ADJ.  
 20 303586 8 ROCKER,ARM  
 21 303587 8 BUSHING  
 22 611166 4 SUPPORT,ROCKER ARM  
 23 303594 4 WASHER  
 24 611170 4 STUD,CYL.HEAD 4.180  
 25 611167 4 SPRING,SHAFT ROCKER ARM  
 26 611165 2 SHAFT,ROCKER ARM  
 27 303607 1 CIR-CLIP  
 28 611136 1 TIGHTENER,CHAIN  
 29 302244 2 NUT  
 30 303608 1 SPRING  
 31 303609 1 PIN  
 32 303610 1 HOLDER,BALL  
 33 303611 1 BALL

! 34 303610 1 HOLDER,BALL  
 ! 35 302248 1 RING,SEAL  
 ! 36 302248 1 PLUG,SCREEN  
 ! 37 302248 1 GASKET,CHAIN TENSIONER

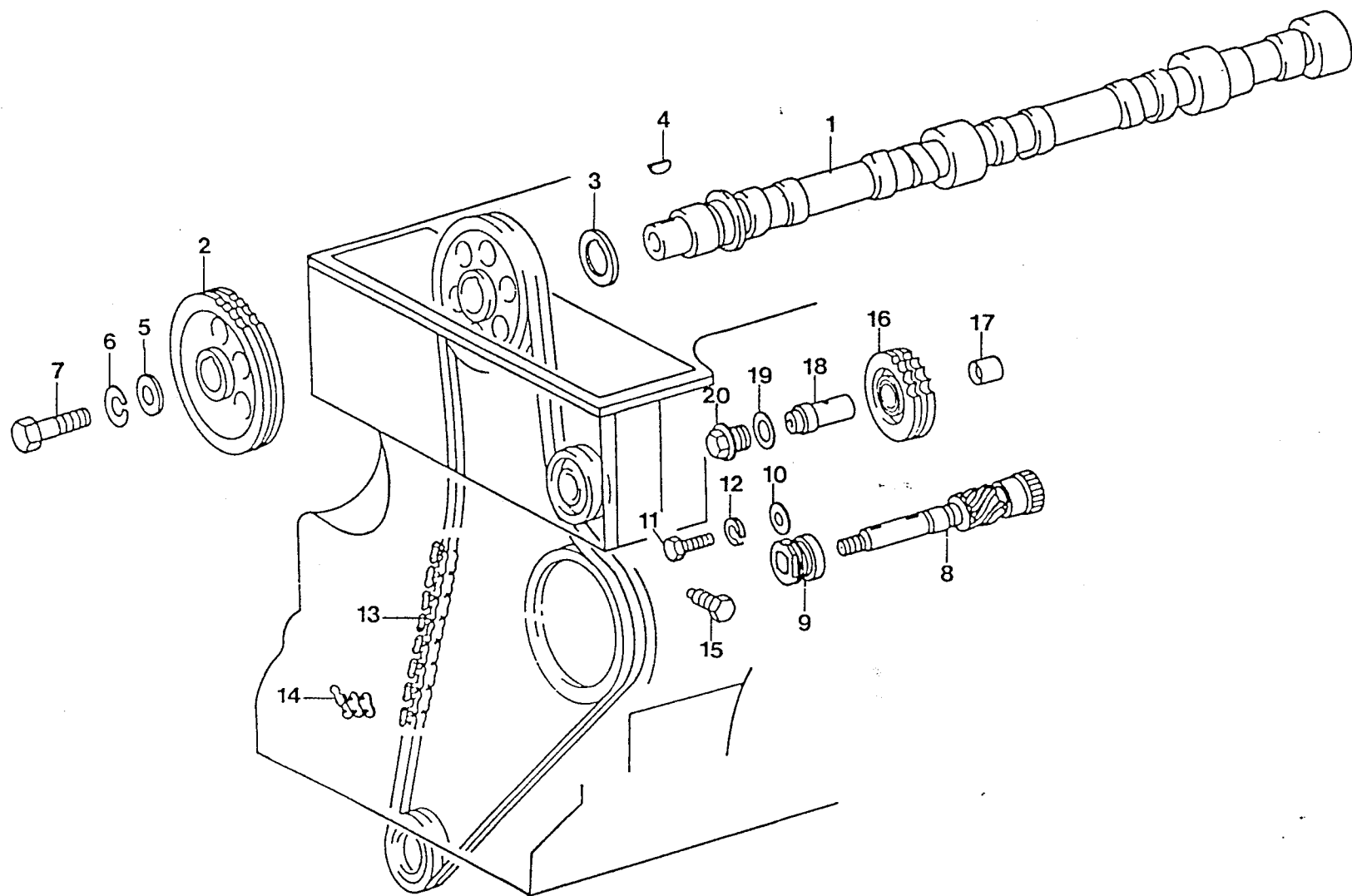
*904300039 8 Coiffe Souppe à l'unité*

!    E N G I N E    T Y P E    !  
 !    4.240    !  
 !    D A T E    !  
 !    22/04/88    !

!    G R O U P   D E S C R I P T I O N    11.00    !    P A G .    !  
 !    T I M I N G   G E A R    C A M S H A F T    !    110009    !

11.00

110109





ITEM PART.N QTY D E S C R I P T I O N      REMARKS      ITEM PART.N QTY D E S C R I P T I O N      REMARKS

1 611101 1 CAMSHAFT,STD  
 2 611102 1 GEAR,CAMSHAFT  
 3 611103 1 RING,DISTANCE  
 4 303564 1 KEY,FEATHER  
 5 303571 1 WASHER  
 6 302235 1 CIR-CLIP  
 7 302236 1 BOLT  
 8 611108 1 SHAFT,INTERMEDIATE  
 9 611109 1 BEARING,TIMING  
 10 303575 1 WASHER  
 11 302237 1 BOLT  
 12 302238 1 WASHER  
 13 611113 1 CHAIN,TRANSMISSION 4.240  
 14 611114 1 LINK,CHAIN  
 15 611148 1 SCREW,TIMING CHAIN  
 16 611150 1 SPROCKET,(TIMING)  
 17 302246 1 BUSHING  
 18 303618 1 PIN,PIVOT  
 19 302247 1 RING,SEAL  
 20 303017 1 PLUG,DRAIN  
 21 303565 1 KEY,FEATHER REP:SIZE 2 DEGS ITEM 4  
 22 303566 1 KEY,FEATHER REP:SIZE 3 DEGS ITEM 4

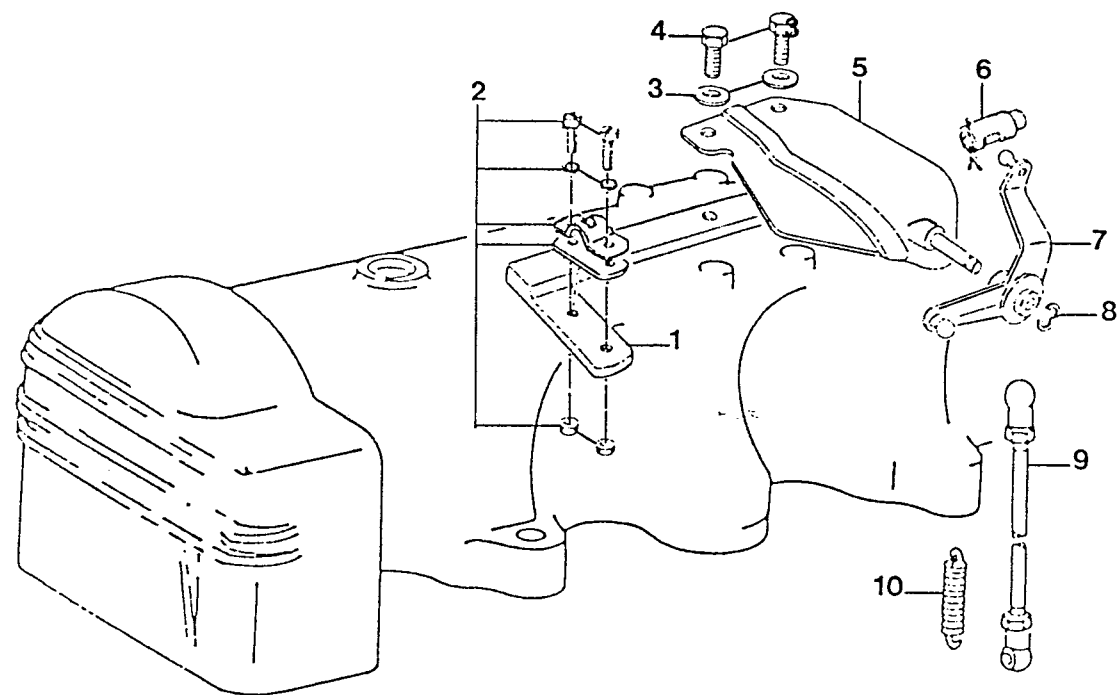
4 303565      c lavette Decaltee      2 Degres  
 303568      3  
 303567      1  
 303568      5 4

! ENGINE TYPE !  
 ! 4.240 !  
 ! DATE !  
 ! 22/04/88 !

! GROUP DESCRIPTION 11.00 !      ! PAG. !  
 ! TIMING GEAR CAMSHAFT !      ! 110109 !

14.00

140009



ITEM PART.N QTY D E S C R I P T I O N      R E M A R K S      I T E M P A R T . N Q T Y D E S C R I P T I O N      R E M A R K S

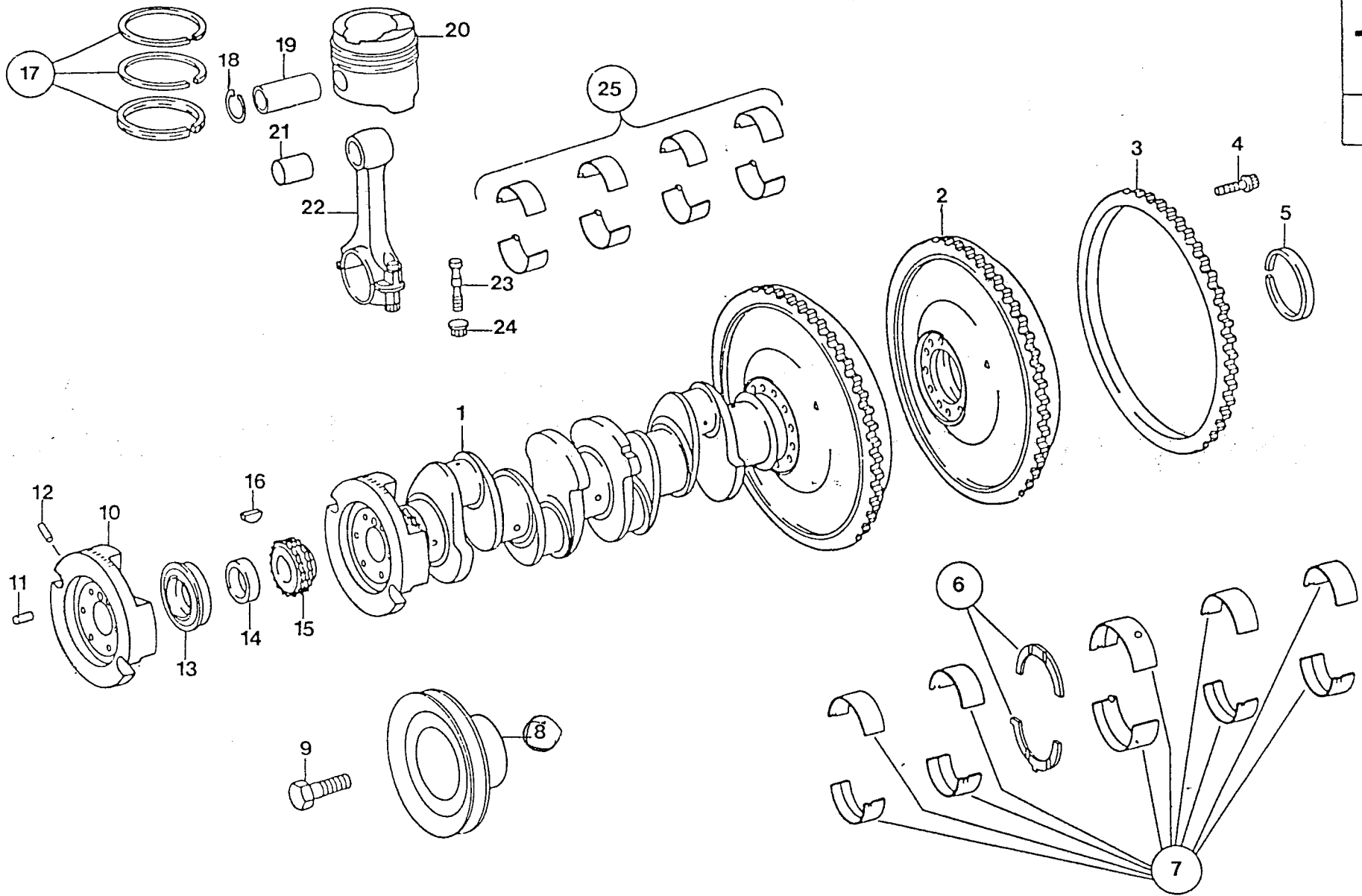
1 639906 1 SUPPORT, ACC. CONTROL 4.240  
 2 835020 1 BRACKET, AND PLATES CPL.  
 3 119139 2 WASHER, CORRUGATED D 8  
 4 119141 2 BOLT, HEX M 8X 20  
 5 302297 1 SUPPORT, SPEED CONTROL 4.240  
 6 830124 1 JOINT, SPHERICAL  
 7 302298 1 LEVER, ANGULAR SPEED CONTROL  
 8 302299 1 CIR-CLIP  
 9 303798 1 ROD, ADJUSTING INJ. PUMP 4.24  
 10 302292 1 SPRING

! E N G I N E   T Y P E   !  
 !     4.240             !  
 !  
 !     D A T E             !  
 !     28/04/88           !

! G R O U P   D E S C R I P T I O N     14.00     !     P A G .     !  
 !     S P E E D   C O N T R O L             !     140009     !  
 !  
 !  
 !

15.00

150009

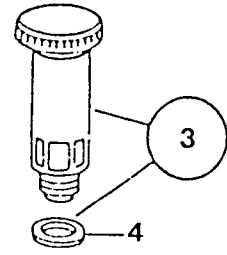
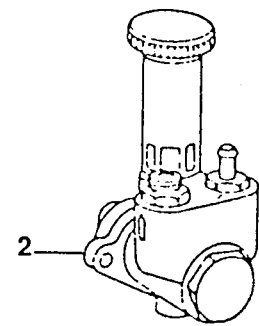
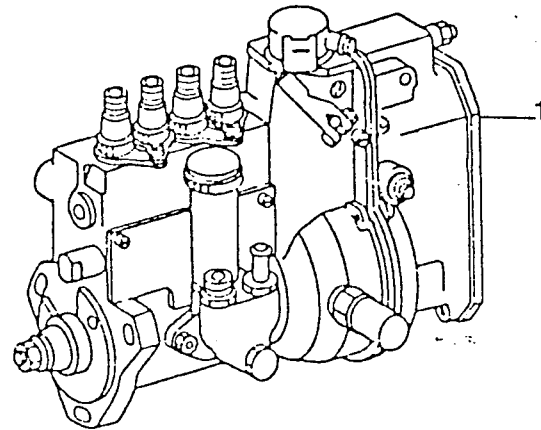


ITEM	PART.N	QTY	D E S C R I P T I O N	REMARKS	ITEM	PART.N	QTY	D E S C R I P T I O N	REMARKS
1	611501	1	CRANKSHAFT,CPL.		34	611543	1	BEARING,CONN.ROD 51.25MM 4.	ITEM 25
2	611502	1	FLYWHEEL,CPL.4.240						
3	611503	1	GEAR,FLYWHEEL						
4	611505	12	BOLT,FLYWHEEL						
5	611521	1	SEAL,RING CRANKSHAFT (REAR)						
6	303542	2	PLATE,GUARD 2.15MM						
7	302268	1	BEARING,CRANKSHAFT STD.70MM						
8	301368	1	PULLEY,WATER PUMP 1-GROOVE						
9	302272	3	BOLT						
10	302266	1	COUNTERWEIGHT						
11	303530	2	PIN,DOWEL						
12	303532	1	PIN,CYLINDRICAL						
13	302267	1	BUSHING,CRANKSHAFT 4.240						
14	611508	1	RING,DISTANCE						
15	611507	1	GEAR,CAMSHAFT						
16	303547	1	KEY,FEATHER						
17	611530	4	RING,PISTON SERIES CPL D87						
18	303560	8	CIR-CLIP						
19	611531	4	PIN,PISTON						
20	611529	4	PISTON,HEAD CPL						
21	303549	4	PIN,PISTON BUSHING 29MM						
22	611524	4	ROD,CONNECTING CPL.						
23	601519	8	BOLT,CONN.ROD						
24	601520	8	NUT,CONN.ROD						
25	611540	1	BEARING,CONN.ROD STD 52.00MM						
26	303543	2	PLATE,GUARD 2.20MM	ITEM 6					
27	303544	2	PLATE,GUARD 2.25MM	ITEM 6					
28	302273	1	BEARING,CRANKSHAFT REP:SIZE	ITEM 7					
29	302274	1	BEARING,CRANKSHAFT REP:SIZE	ITEM 7					
30	302275	1	BEARING,CRANKSHAFT REP:SIZE	ITEM 7					
31	303550	4	PIN,PISTON BUSHING 29.50MM	ITEM 21					
32	611541	1	BEARING,CONN.ROD 51.75MM 4.	ITEM 25					
33	611542	1	BEARING,CONN.ROD 51.50MM 4.	ITEM 25					

! ENGINE TYPE !	! GROUP DESCRIPTION	15.00	! PAG. !
! 4.240 !	! CRANKSHAFT	PISTONS	! 150009 !
! DATE !			
! 26/04/88 !			

21.00

210009



ITEM PART.N QTY D E S C R I P T I O N

REMARKS

ITEM PART.N QTY D E S C R I P T I O N

REMARKS

1	612101	1	PUMP, INJECTION	4.240	BOSCH
2	612102	1	PUMP, FUEL FEED	4.240	BOSCH
3	602103	1	PUMP, FUEL FEED	4.180	BOSCH
4	302287	1	RING, SEAL		

ENGINE TYPE	4.240
-------------	-------

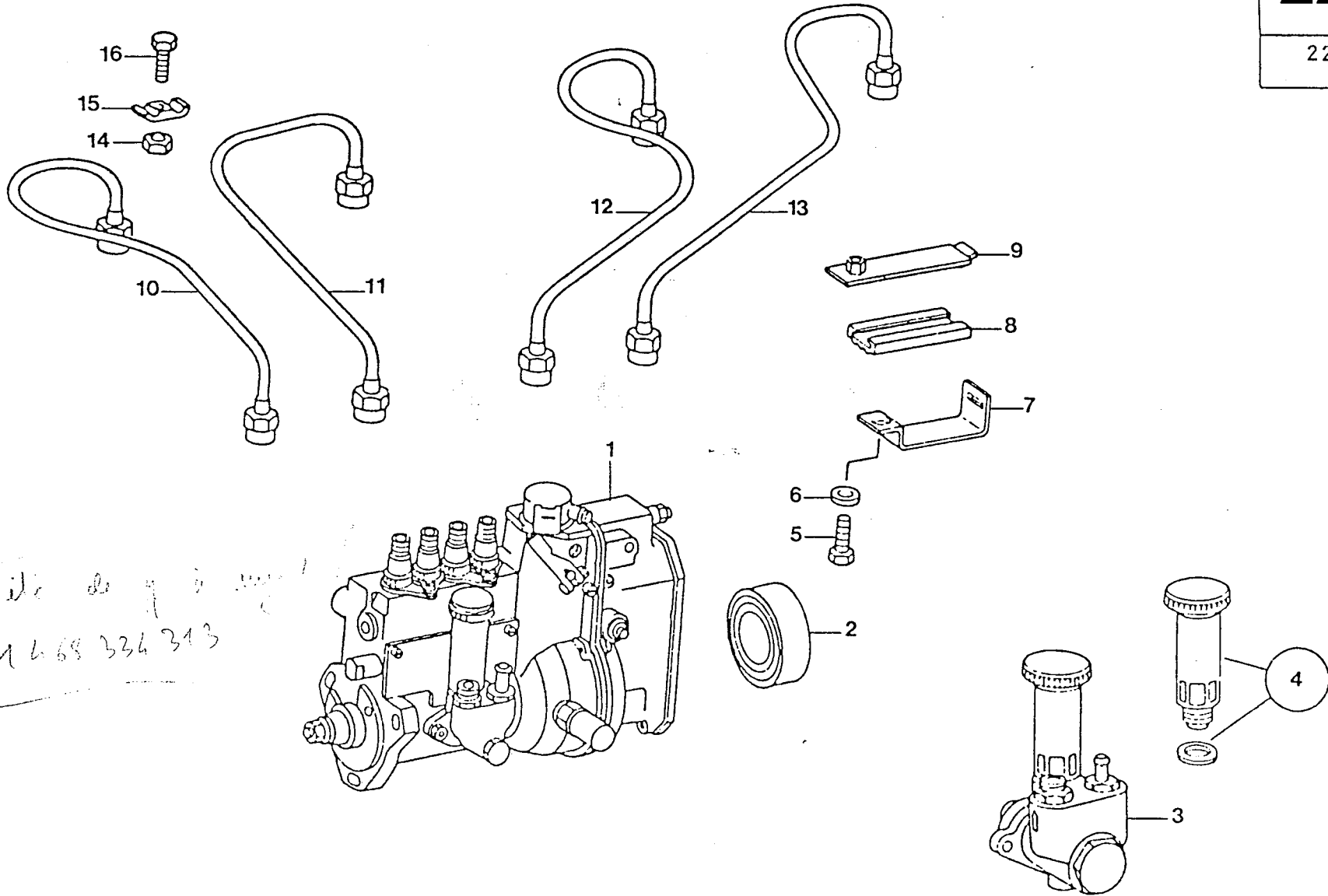
DATE	26/04/88
------	----------

GROUP DESCRIPTION	21.00
INJECTION+FUEL PUMP	

PAG.	210009
------	--------

22.00

220009



*Titre de y i*  
*1668 336 313*



ITEM PART.N QTY D E S C R I P T I O N      REMARKS      ITEM PART.N QTY D E S C R I P T I O N      REMARKS

1 612101 1 PUMP, INJECTION 4.240 BOSCH  
 2 302285 1 BEARING, CASE INJ. PUMP  
 3 612102 1 PUMP, FUEL FEED 4.240 BOSCH  
 4 602103 1 PUMP, FUEL FEED 4.180 BOSCH  
 5 303150 1 BOLT  
 6 302284 1 WASHER  
 7 302281 1 BRACKET, FUEL LINE 3-4  
 8 302283 2 CLAMP, FUEL LINE 3-4 -LOWER  
 9 302282 1 CLAMP, FUEL LINE 3-4  
 10 612142 1 LINE, FUEL CYL. NO1 4.240  
 11 612143 1 LINE, FUEL CYL. NO2 4.240  
 12 612144 1 LINE, FUEL CYL. NO3 4.240  
 13 612145 1 LINE, FUEL CYL. NO4 4.240  
 14 302280 2 NUT  
 15 612146 4 SUPPORT, FUEL LINE  
 16 302286 2 BOLT

9.04.200 1986

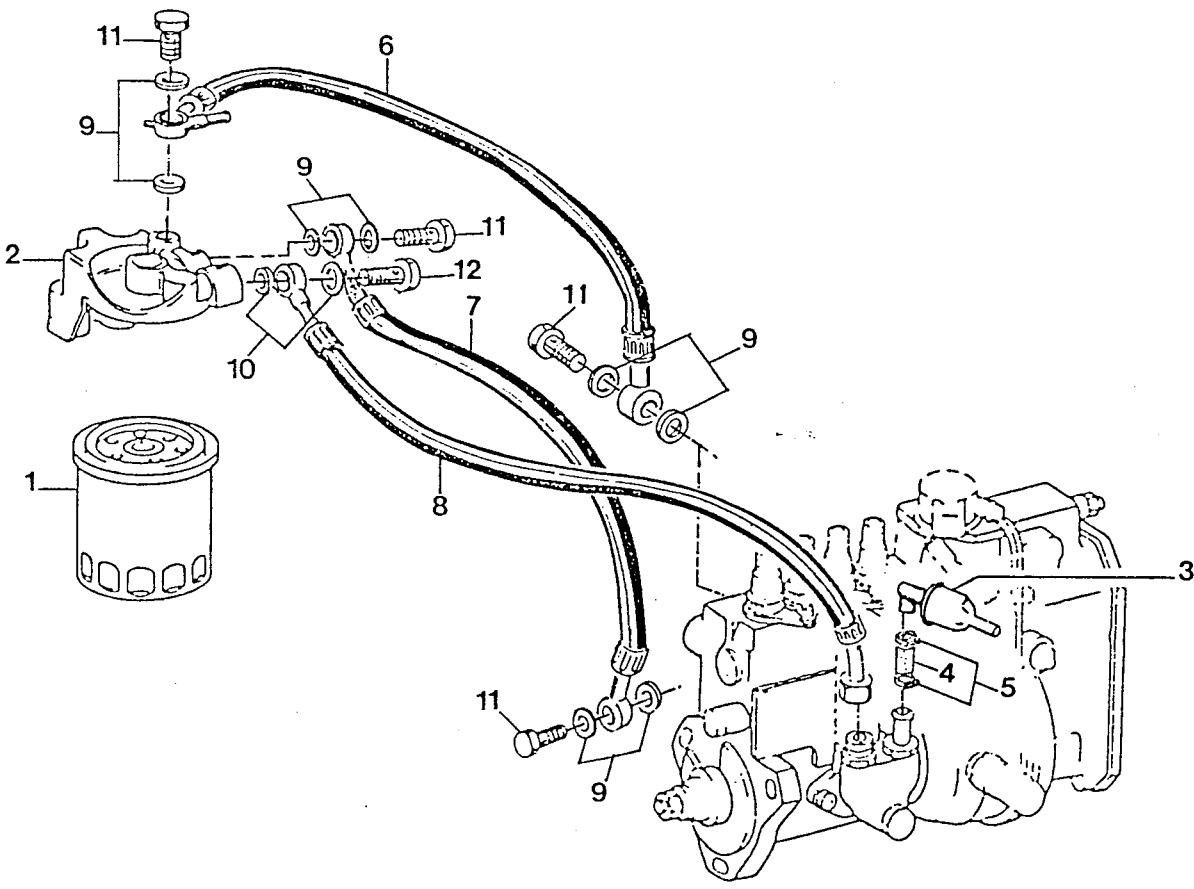
*Tube return gas Caontobone an del  
 seluar pun 1 mesin 0-5 ps*

ENGINE TYPE  
 4.240  
 DATE  
 26/04/88

GROUP DESCRIPTION	22.00	PAG.
INJECTION LINES	NOZZLES	220009

23.00

230009



ITEM PART.N QTY D E S C R I P T I O N      REMARKS      ITEM PART.N QTY D E S C R I P T I O N      REMARKS

1 622350 1 FILTER,FUEL  
 2 302142 1 COVER,OIL FILTER -TOP- 4.24  
 3 302301 1 FILTER,FUEL -FINE- CPL. 4.2  
 4 605111 1 HOSE,D 6 L= 45  
 5 612344 2 CLAMP,HOSE INJ.PUMP  
 6 622338 1 HOSE,FUEL 4.240-5.300/T  
 7 622343 1 HOSE,FUEL RETURN 4.240 5.30  
 8 622332 1 HOSE,FUEL 4.240-5.300/T  
 9 300325 6 RING,SEAL D12  
 10 300307 2 GASKET,RING D14  
 11 432134 4 BOLT,BANJO M12X1,5  
 12 432515 1 BOLT,BANJO M14X1,5

! ENGINE TYPE !  
 ! 4.240 !  
 ! DATE !  
 ! 19/05/88 !

! GROUP DESCRIPTION 23.00 !  
 ! FUEL FILTER ASSY. !  
 ! PAG. !  
 ! 230009 !

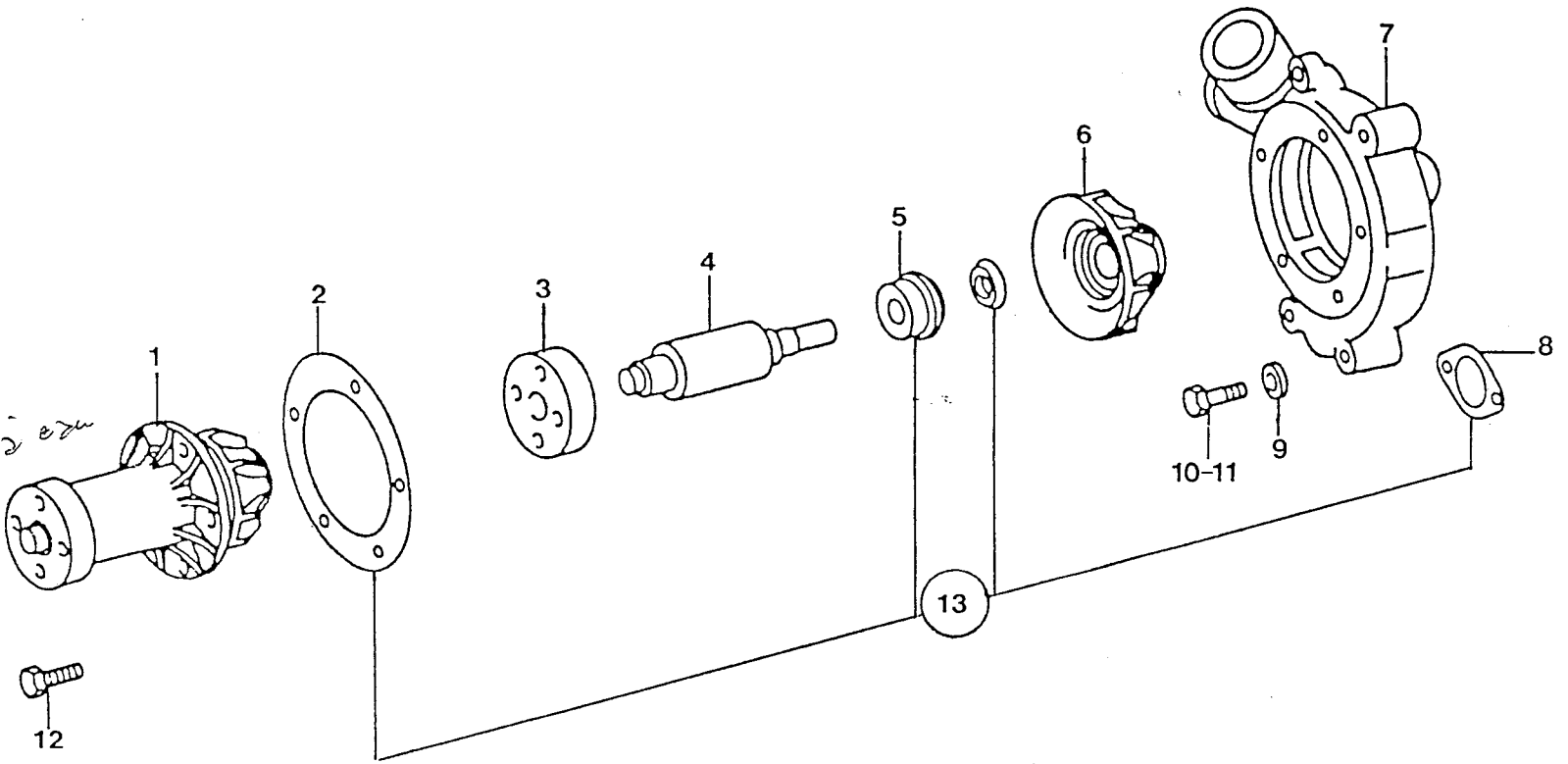




40.00

400009

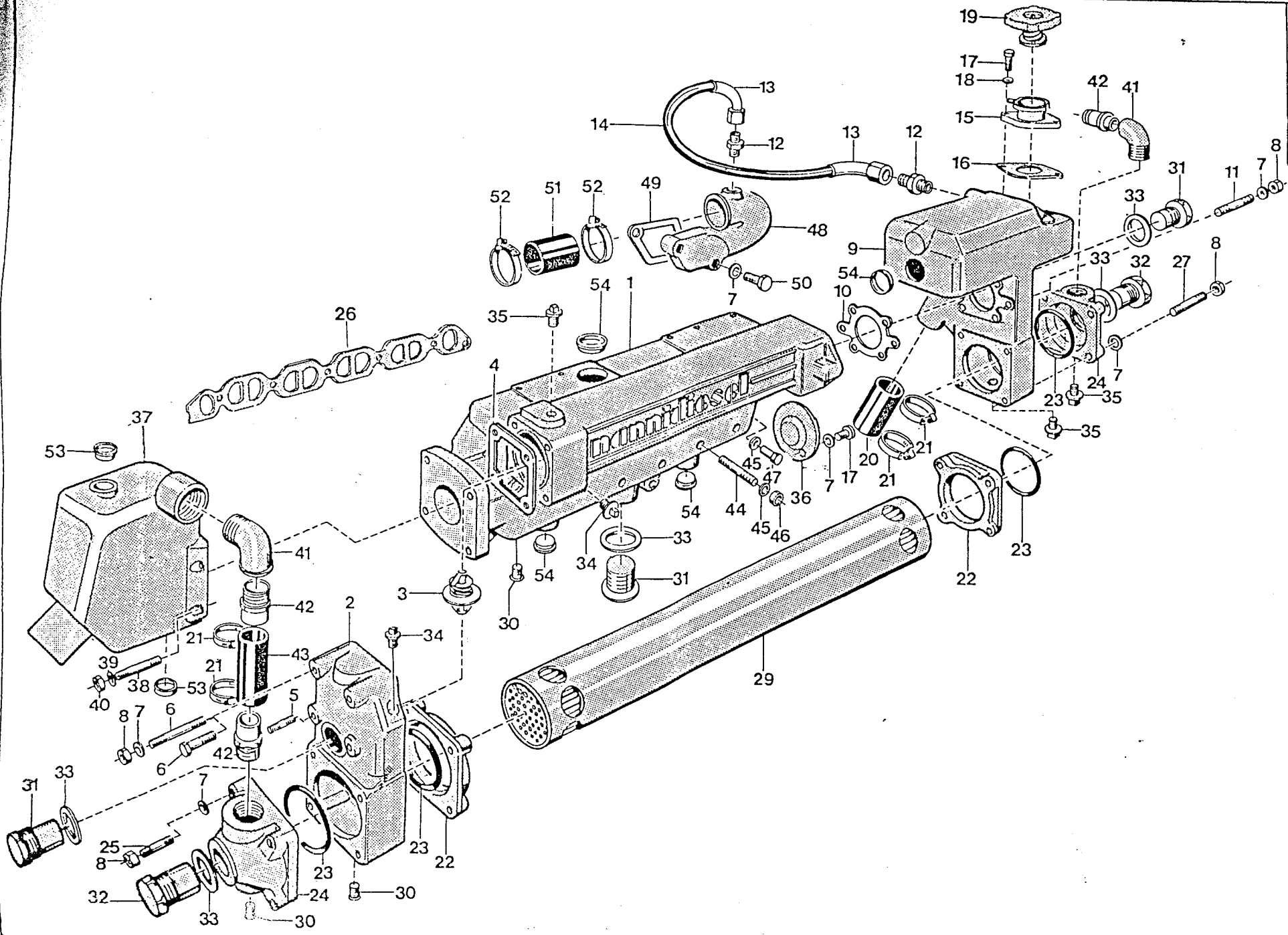
Partic 17 2 224  
page 15





46.00

460009





ITEM PART.N QTY D E S C R I P T I O N      REMARKS      ITEM PART.N QTY D E S C R I P T I O N      REMARKS

1	300110	1	HOUSING, EXHAUST MANIFOLD 4.	!	34	604634	2	PLUG, HEX 1/2"	
2	300128	1	COVER, EXH. MANIFOLD R 4.240	!	35	639853	2	PLUG, HEX 3/8"G	
3	674032	1	THERMOSTAT, 83*	!	36	300130	1	COVER, MANIFOLD 4.240 5.300/	
4	300196	1	GASKET, THERM. COVER 4.240 5.	!	37	300136	1	MIXER, 4.240-5.300	RT 301 848
5	632004	3	STUD, M 8X 65	!	38	119155	4	STUD, M10X 30	
6	639603	1	BOLT, HEX M 8X 65	!	39	119137	4	WASHER, CORRUGATED D10	
7	119139	22	WASHER, CORRUGATED D 8	!	40	119143	4	NUT, M10	
8	27322	18	NUT, M 8	!	41	892304	2	ELBOW, 1"	
9	300126	1	COVER, EXH. MANIFOLD F 4.240	!	42	644116	3	PILAR, HOSE 1"(SHORT)	
10	300198	1	GASKET, RING D26 (AL)	!	43	644110	1	HOSE, D32 L= 50	
11	300105	6	STUD, M 8X 80	!	44	300107	5	STUD, M10X145	
12	574613	2	NIPPLE, REDUCING 3/8"X1/4G	!	45	119135	6	WASHER, PLAIN D10	
13	300150	2	NIPPLE, VENTHOSE 4.240 5.300	!	46	574519	5	NUT, LOCK M10	
14	300183	1	HOSE, D 6 L= 220 - 4.240	!	47	300138	1	NUT, M10 HIGH	
15	300216	1	FILLING, NECK WATER CPL.	!	48	574611	1	FLANGE, WATER OUTLET 4.240-	
16	300157	1	GASKET, FILLINGNECK FLANGE	!	49	574612	1	GASKET, WATER OUTLET 4.240-5	
17	119141	4	BOLT, HEX M 8X 20	!	50	644113	2	BOLT, HEX M 8X 50	
18	119138	2	WASHER, SPRING D 8	!	51	574614	1	HOSE, D50 L= 50	
19	604614	1	CAP, FILLING O, 7 DOUBLE SEA	!	52	634621	2	CLAMP, HOSE 44-56	
20	300188	1	HOSE, D40 L= 55	!	53	494517	2	CAP, FREEZE	
21	604533	4	CLAMP, HOSE 32-44	!	54	300217	4	CAP, FREEZE D36	
22	300132	2	FLANGE, TUBESTACK 4.240-5.30	!					
23	632121	4	O-RING, 79.77X5, 37	!	635520				Edh Complet 1-54
24	300134	2	COVER, HEATEXCH. 4.240-5.300/	!					
25	300109	4	STUD, M 8X 85	!					
26	635506	1	GASKET, MANIFOLD INTAKE-EXH.	!					
27	300106	4	STUD, M 8X100	!					
			*	!					
29	300114	1	TUBE, STACK 4.240	!					
30	639853	3	PLUG, HEX 3/8"G	!					
31	300987	3	PLUG, HEX M30X1, 5	!					
32	300208	2	ANODE, ZINC CPL (M30X1, 5)	!					
33	300197	5	GASKET, RING D30 (AL)	!					

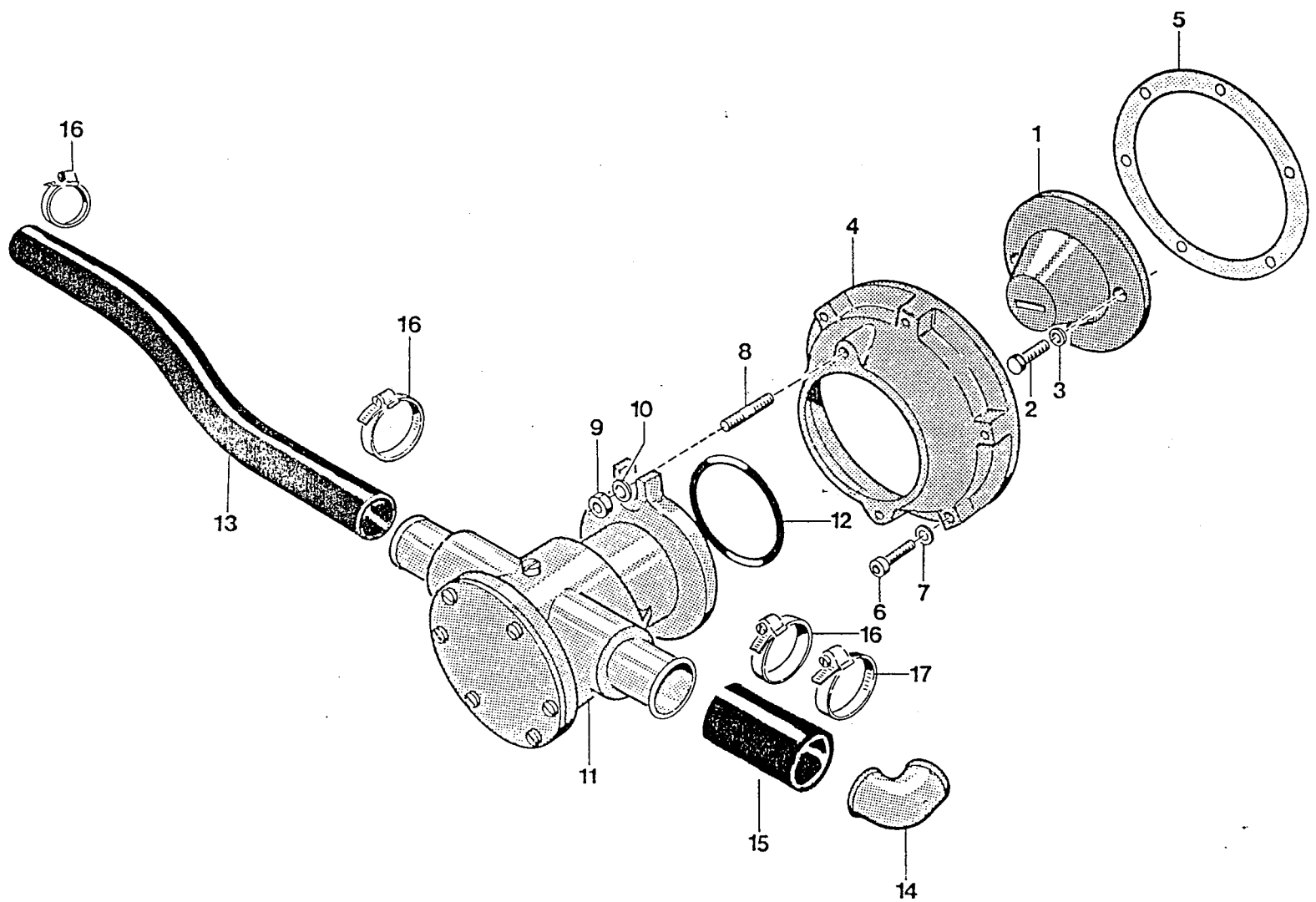
! ENGINE TYPE !  
! 4.240 !

! DATE !  
! 20/05/88 !

! GROUP DESCRIPTION 46.00 ! PAG. !  
! HEATEXCHANGER EXHAUST MA ! 460009 !

47.00

470009



ITEM PART.N QTY D E S C R I P T I O N      REMARKS      ITEM PART.N QTY D E S C R I P T I O N      REMARKS

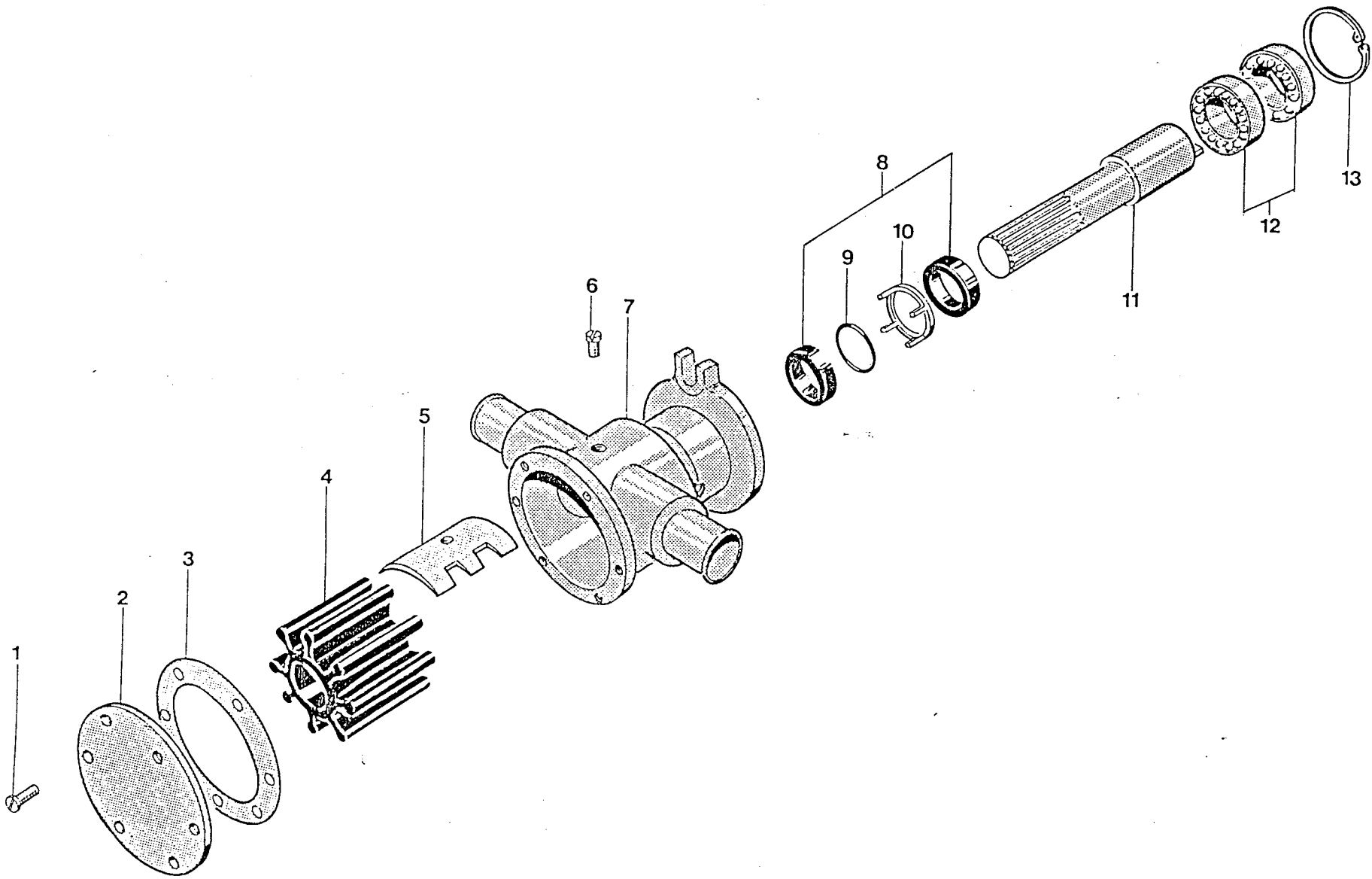
1 634027 1 CONNECTION,W/PUMP PTO 4.240  
 2 119148 2 BOLT,HEX M 8X 30  
 3 119138 4 WASHER,SPRING D 8  
 4 634026 1 ADAPTER,WATERP.PTO 4.240 5.  
 5 614513 1 GASKET,PUMP ADAPTOR 4.240-5  
 6 634037 6 BOLT,SOCK M 6X 30  
 7 609602 6 WASHER,CORRUGATED D 6  
 8 494519 2 STUD,M 8X 24  
 9 27322 2 NUT,M 8  
 10 27323 2 WASHER,PLAIN D 8  
 11 635471 1 PUMP,WATER F7B-9 (2/3 CAM)  
 12 634016 1 O-RING,WATER PUMP 4.240 5.3  
 13 300919 1 PIPE,PUMP-HE 4.240-5.300\T  
 14 635473 1 ELBOW,WATERPUMP  
 15 574006 1 HOSE,D28 L= 50  
 16 604526 3 CLAMP,HOSE 22-32  
 17 300922 1 CLAMP,HOSE 26-38

! ENGINE TYPE !  
 ! 4.240 !  
 !-----!  
 ! DATE !  
 ! 19/05/88 !

! GROUP DESCRIPTION 47.00 !      ! PAG. !  
 ! SEA WATER PUMP ASSY. !      ! 470009 !

47.01

470109



ITEM PART.N QTY D E S C R I P T I O N      REMARKS      ITEM PART.N QTY D E S C R I P T I O N      REMARKS

1 614625 1 SCREW,COVER W/PUMP F7B-9/10  
 2 614623 1 COVER,END F7B-803  
 3 614616 1 GASKET,F7B  
 4 544310 1 IMPELLER,WATER PUMP F 7B-80  
 5 614621 1 CAM,WATER PUMP F7B-803  
 6 614622 1 SCREW,CAM WATER PUMP F7B-80  
 7 614620 1 HOUSING,WATER PUMP F7B-9/10  
 8 614516 2 RING,SEAL OIL W/PUMP F5B-90  
 9 614626 1 O-RING,WATER PUMP F7B-9/10  
 10 614624 1 WASHER,WATER PUMP F7B-9/10  
 11 302319 1 SHAFT,WATER PUMP F7B 2/3CAM  
 12 614619 2 BEARING,CASE F7B-9/10  
 13 614627 1 RING,RETAINING  
 14 635471 1 PUMP,WATER F7B-9 (2/3 CAM) 1 ↑ 13

*5000 ancre*  
*catalogue ref en 68*  
*4700543*  
*4700544*  
*4700545*

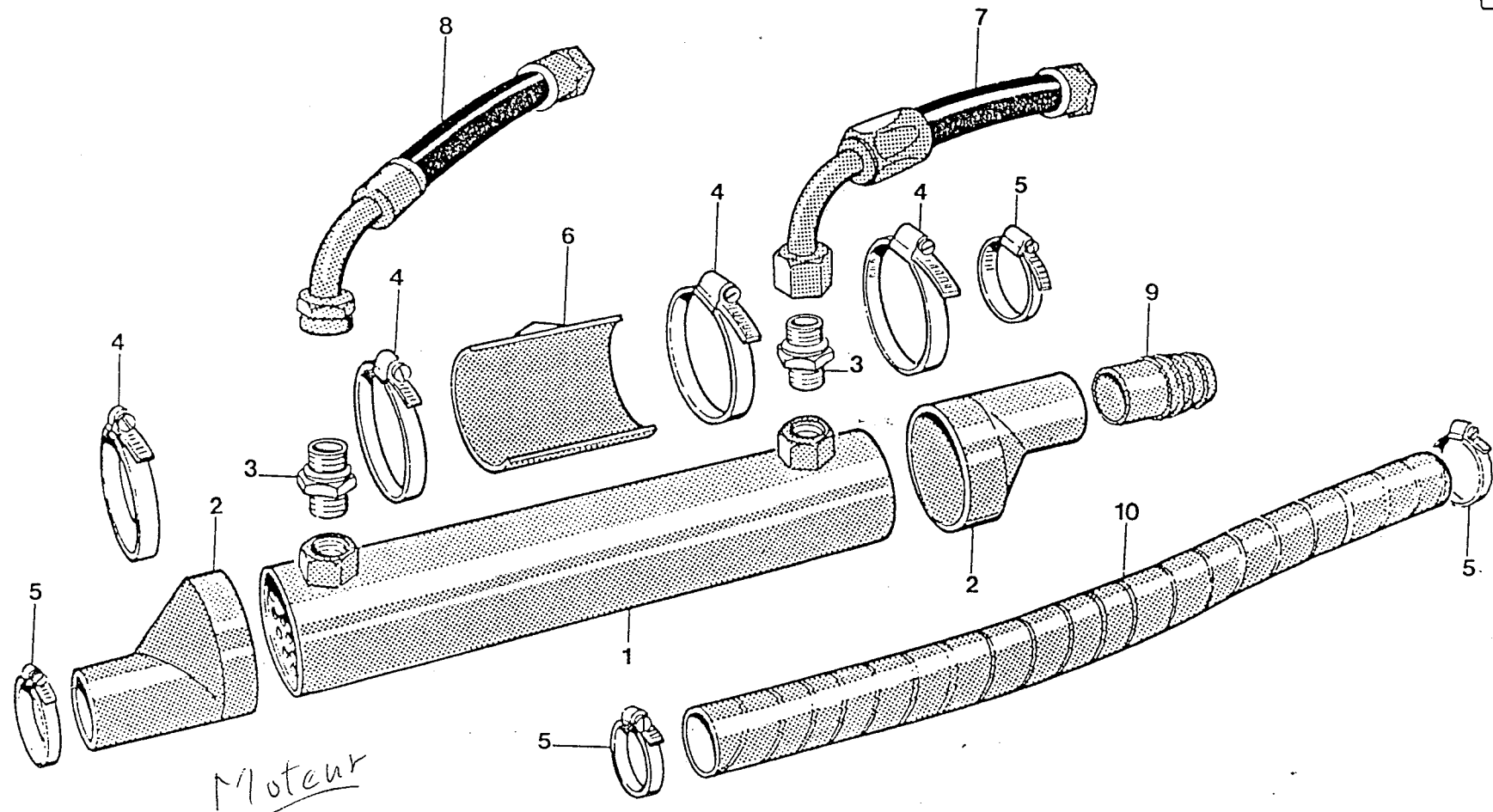
! ENGINE TYPE !  
 ! 4.240 !

! DATE !  
 ! 19/05/88 !

! GROUP DESCRIPTION 47.01 !  
 ! SEA WATER PUMP ! 470109 !

49.00

490009



ITEM PART.N QTY D E S C R I P T I O N      R E M A R K S      I T E M P A R T . N Q T Y      E S C R I P T I O N      R E M A R K S

1 899403    1 COOLER,OIL 4.240  
 2 899405    2 HOSE,OIL COOLER  
 3 785072    2 NIPPLE,REDUCING MM1/2"X1/2"  
 4 634620    4 CLAMP,HOSE 60-80  
 5 604533    4 CLAMP,HOSE 32-44  
 6 635661    1 SUPPORT,OIL COOLER 4.240  
 7 635704    1 HOSE,OIL L=230 CPL  
 8 635702    1 HOSE,OIL L=540 CPL  
 9 635662    1 HOSE,WATER INTAKE  
 10 639786    1 HOSE,D32 L= 500

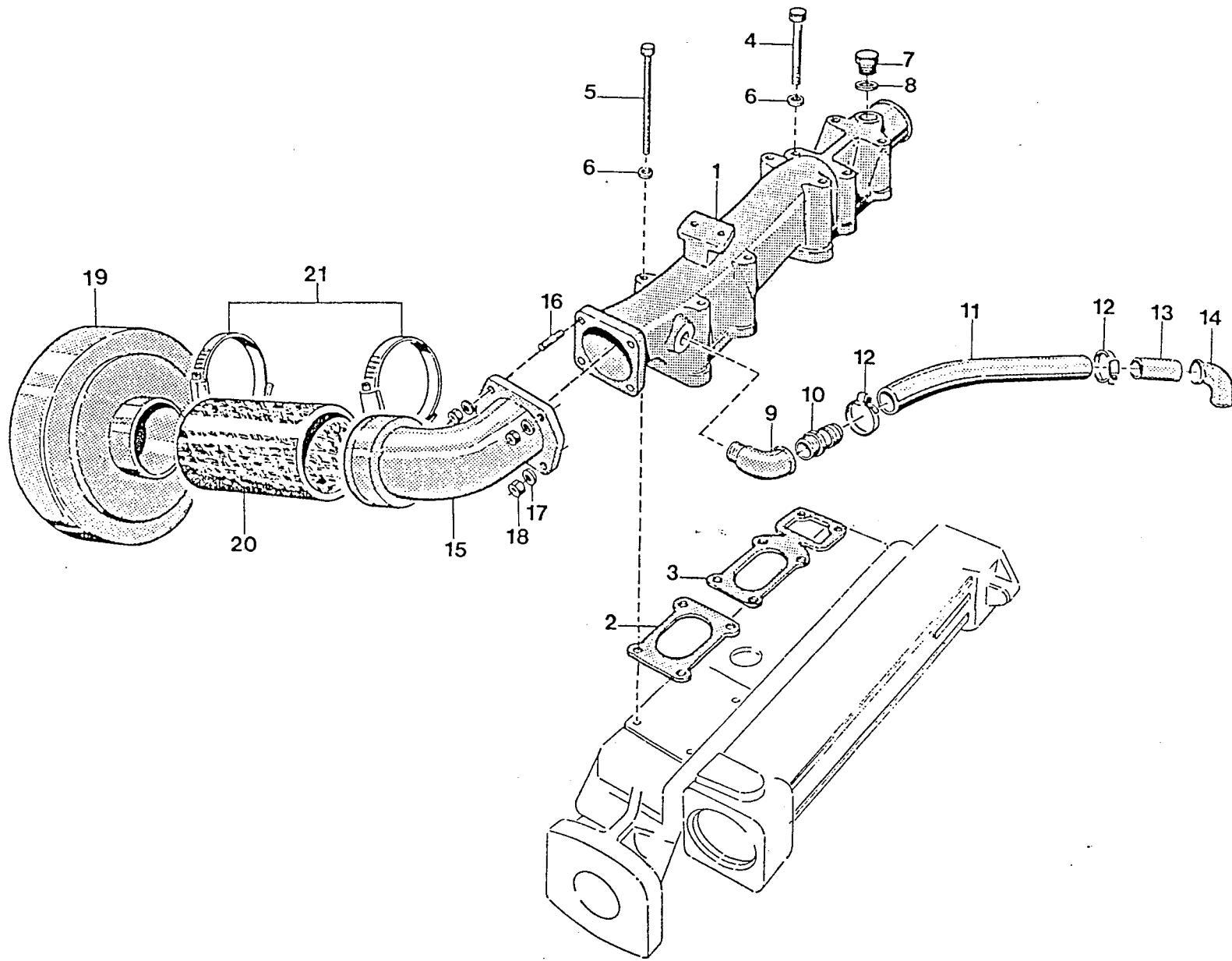
!   E N G I N E   T Y P E   !  
 !     4.240                 !

!   D A T E                 !  
 !   20/05/88               !

!   G R O U P   D E S C R I P T I O N    49.00    !   P A G .   !  
 !   O I L   C O O L E R                     !   490009   !

51.00

510009





ITEM PART.N QTY D E S C R I P T I O N      REMARKS      ITEM PART.N QTY D E S C R I P T I O N      REMARKS

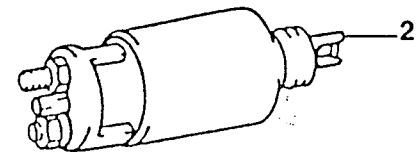
1	300112	1	MANIFOLD, INTAKE 4.240	!
2	300202	1	GASKET, MANIFOLD 4.240 5.300	!
3	300200	1	GASKET, MANIFOLD 4.240 5.300	!
4	300193	3	BOLT, HEX M 8X 70	!
5	300192	6	BOLT, HEX M 8X 95	!
6	119139	12	WASHER, CORRUGATED D 8	!
7	875506	1	PLUG, HEX M14X1,5	!
8	300307	1	GASKET, RING D14	!
9	434055	1	ELBOW, M-F 3/8" G	!
10	434051	1	SOCKET, HOSE 3/8	!
11	300207	1	HOSE, D16 L= 260	!
12	434506	4	CLAMP, HOSE 13-20	!
13	300190	1	PIPE, D14 L= 55	!
14	300399	1	ELBOW, RUBBER	!
15	636103	1	SUPPORT, AIR FILTER 4.240-5.	!
16	605108	4	STUD, M 6X 11	!
17	609602	4	WASHER, CORRUGATED D 6	!
18	635460	4	NUT, M 6	!
19	636101	1	FILTER, AIR	!
20	636102	1	HOSE, D40 L= 60	!
21	634620	2	CLAMP, HOSE 60-80	!

!    E N G I N E    T Y P E    !  
 !  
 !    D A T E    !  
 !    20/05/88    !

!    G R O U P   D E S C R I P T I O N    51.00    !    P A G .    !  
 !    I N T A K E   M A N I F O L D    !    510009    !

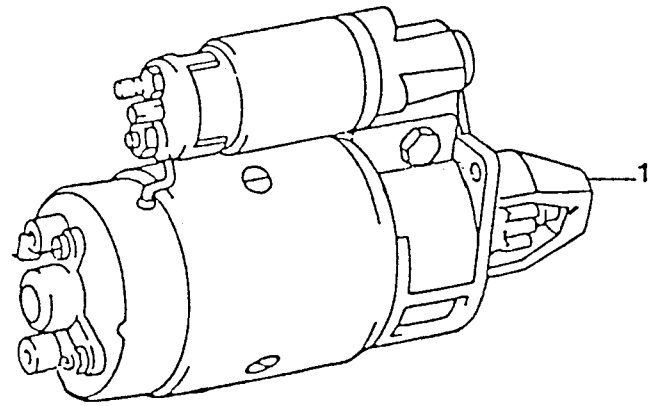
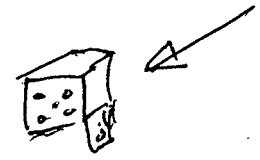
70.00

700009



Relais de démarrage

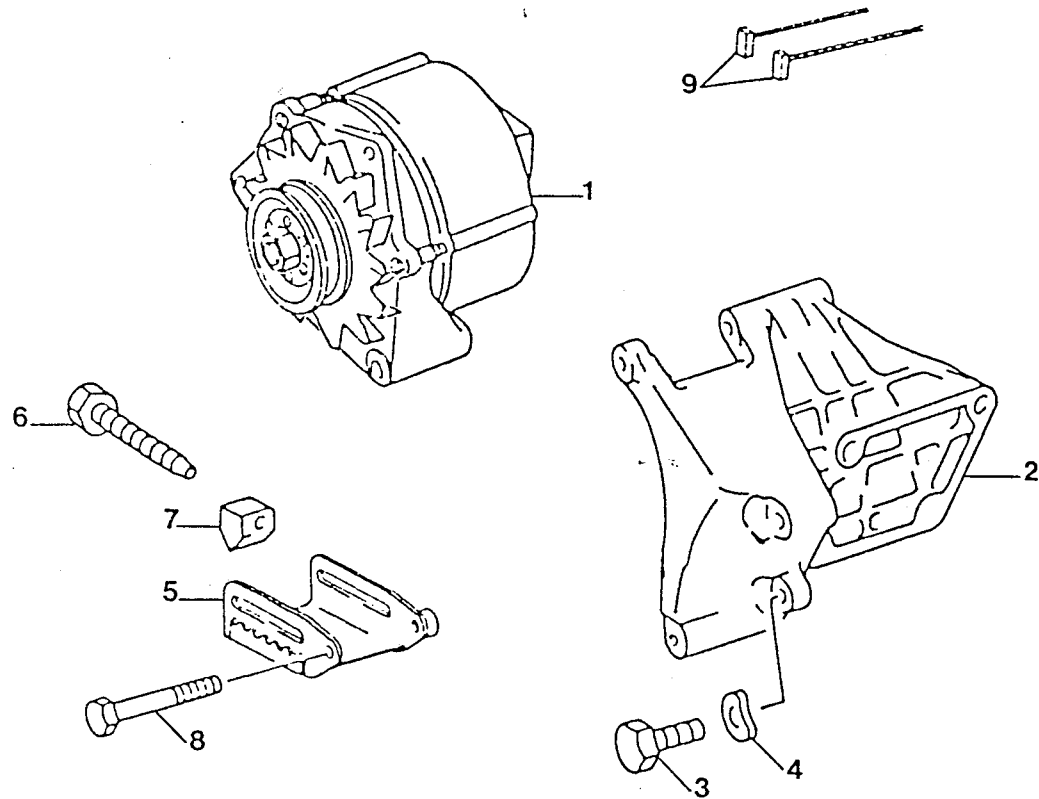
970 300 716





73.00

730009



ITEM	PART.N	QTY	D E S C R I P T I O N	REMARKS	ITEM	PART.N	QTY	D E S C R I P T I O N	REMARKS
------	--------	-----	-----------------------	---------	------	--------	-----	-----------------------	---------

1	607309	1	ALTERNATOR, 12V 55A BOSCH-4.						
2	302208	1	SUPPORT, ALTERNATOR 4.240	< 039843					
3	300409	1	BOLT, HEX M 8X 55	< 039843					
4	302216	1	WASHER	< 039843					
5	302324	1	BRACKET, ADJ. ALTERNATOR 4.24						
6	302325	1	BOLT						
7	303335	1	FOLLOWER, ALTERNATOR						
8	302326	1	BOLT						
9	302327	1	SET, CARBON BRUSH ALTERNATOR						

E N G I N E	T Y P E
4.240	

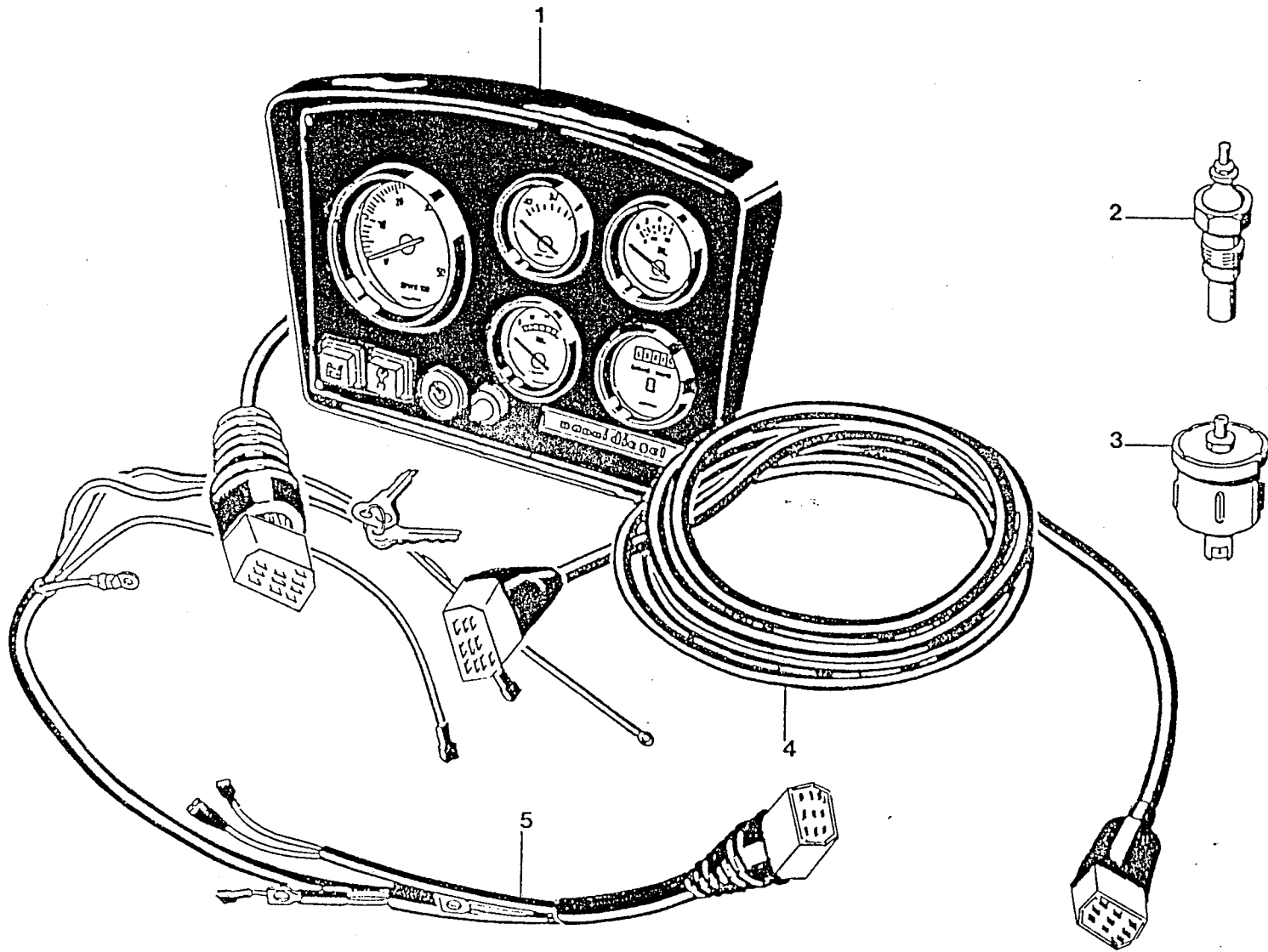
D A T E
26/05/88

GROUP DESCRIPTION	73.00
ALTERNATOR ASSY. STD	

PAG.
730009

74.01

740109



ITEM	PART.N	QTY	D E S C R I P T I O N	REMARKS	ITEM	PART.N	QTY	D E S C R I P T I O N	REMARKS
------	--------	-----	-----------------------	---------	------	--------	-----	-----------------------	---------

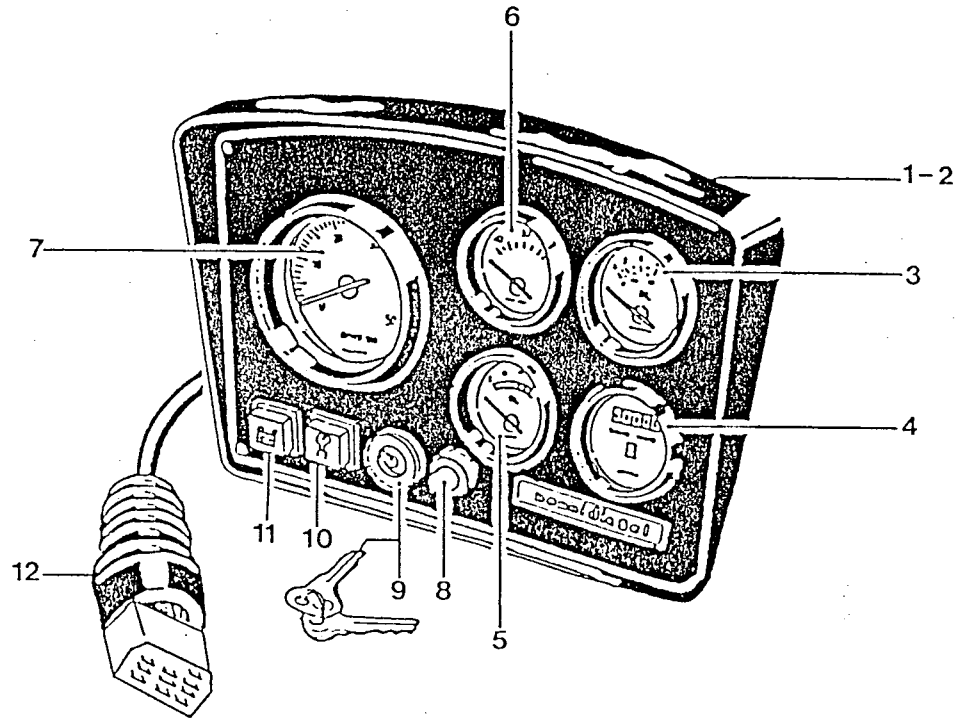
1	300420	1	PANEL, 5 INSTRUMENTS 12V CPL						
2	861602	1	TRANSM, YAZ, TEMP, 120C, M14, 1P						
3	300428	1	TRANSM, YAZ, PRES, 6B, M10, 1P						
4	851405	1	WIRING, INTERMEDIATE ( 4 MTR						
5	300394	1	WIRING, ENGINE 4.240-5.300/T						

ENGINE TYPE	4.240
DATE	27/05/88

GROUP DESCRIPTION	74.01	PAG.
INSTRUMENT PANEL LXP		740109

75.01

750109





ITEM	PART.N	QTY	D E S C R I P T I O N	REMARKS	ITEM	PART.N	QTY	D E S C R I P T I O N	REMARKS
------	--------	-----	-----------------------	---------	------	--------	-----	-----------------------	---------

1	300420	1	PANFL, 5 INSTRUMENTS 12V CPL	2 ↑ 12
2	850309	1	PLATE, PANEL 5 INSTRUMENTS	
3	300427	1	GAUGE, YAZ, PRES, 0-68, 12V, D	
4	861101	1	GAUGE, YAZ, HOUR, 12V, 1P, D 52	
5	860801	1	GAUGE, YAZ, VOLT, 8-16, D 52	
6	860603	1	GAUGE, YAZ, TEMP, 40-120, 12V, D	
7	861014	1	GAUGE, YAZ, TACH, 5000, 1P, D 85	
8	300967	1	BUTTON, PUSH	
9	850404	1	SWITCH, BOSCH STARTER + GLOW	
10	850572	1	LIGHT, WARNING CPL. 12V GLOWP	
11	850570	1	LIGHT, WARNING CPL. 12V BATTE	
12	851305	1	WIRING, PANEL	

24 volts 860602 Yamu 24/05/88

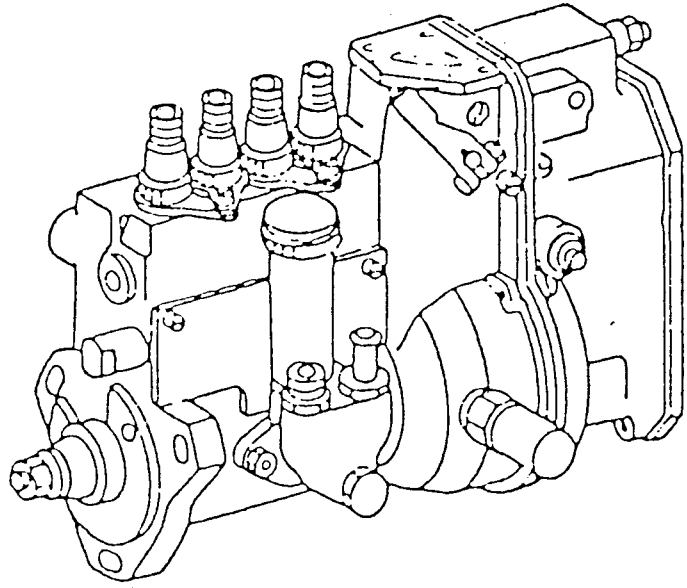
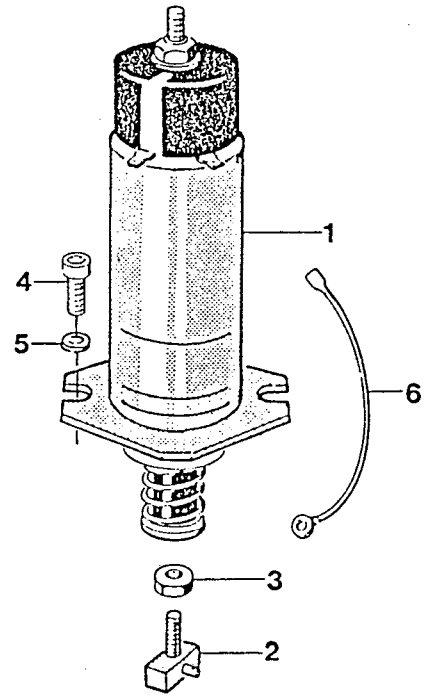
ENGINE TYPE
4.240

DATE
27/05/88

GROUP DESCRIPTION	75.01	PAG.
INSTRUMENT PANEL LXP		750109

76.00

h'essence pas en main a ele 760009  
26 volts ele reference  
21102/59 (970 087 191)



ITEM	PART.N	QTY	D E S C R I P T I O N	REMARKS	ITEM	PART.N	QTY	D E S C R I P T I O N	REMARKS
------	--------	-----	-----------------------	---------	------	--------	-----	-----------------------	---------

1	87190	1	SOLENOID, STOP 4.240 5.300/T	12V					
2	637303	1	PIN, SOLENOID						
3	635460	1	NUT, M 6						
4	24005	2	BOLT, SOCK M 6X 20						
5	609602	2	WASHER, CORRUGATED D 6						
6	637401	1	CABLE, L=150 NEGATIVE	-					

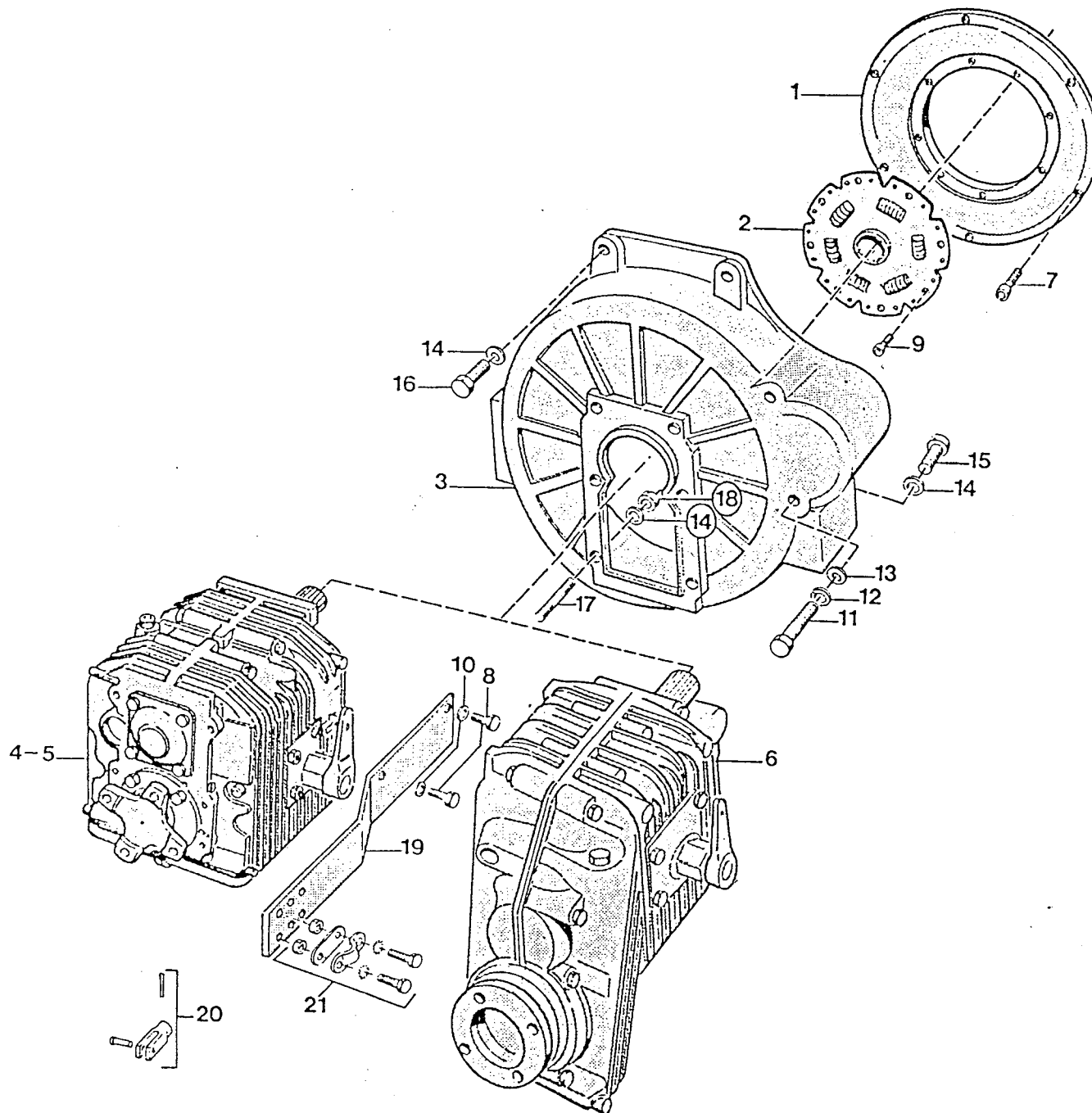
ENGINE TYPE	4.240
-------------	-------

DATE	30/05/88
------	----------

GROUP DESCRIPTION	76.00	PAG.
ELECTRIC STOP		760009

80.00

800009



ITEM	PART.N	QTY	D E S C R I P T I O N	REMARKS	ITEM	PART.N	QTY	D E S C R I P T I O N	REMARKS
------	--------	-----	-----------------------	---------	------	--------	-----	-----------------------	---------

1	777060	1	SUPPORT,DAMPERPLATE 4.240-5	
2	776650	1	DAMPERPLATE,4.240-5.300	
3	639701	1	HOUSING,FLYWHEEL HBW250 4.2	
4	777110	1	GEARBOX,HBW250 -1,88R	
5	777115	1	GEARBOX,HBW250 -2,74R	
6	776340	1	GEARBOX,HBW150V-2,13R	
7	498003	6	BOLT,SOCK M 8X 25	
8	639903	2	BOLT,HEX M 8X 16	
9	119147	8	BOLT,SOCK M 6X 12	
10	119138	2	WASHER,SPRING D 8	
11	635920	2	BOLT,HFX M12X140	
12	409154	2	WASHER,SPRING D12	
13	409153	2	WASHER,PLAIN D12	
14	119137	11	WASHER,CORRUGATED D10	
15	639604	3	BOLT,HEX M10X 55	
16	579602	2	BOLT,HFX M10X 70	
17	649724	6	STUD,M10X 25	
18	119143	6	NUT,M10	
19	639921	1	SUPPORT,TELECOMM 4.240 5.30	
20	830123	1	FORK	
21	835020	1	BRACKET,AND PLATES CPL.	

ENGINE TYPE
-------------

4.240

DATE
------

20/05/88

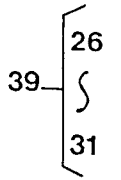
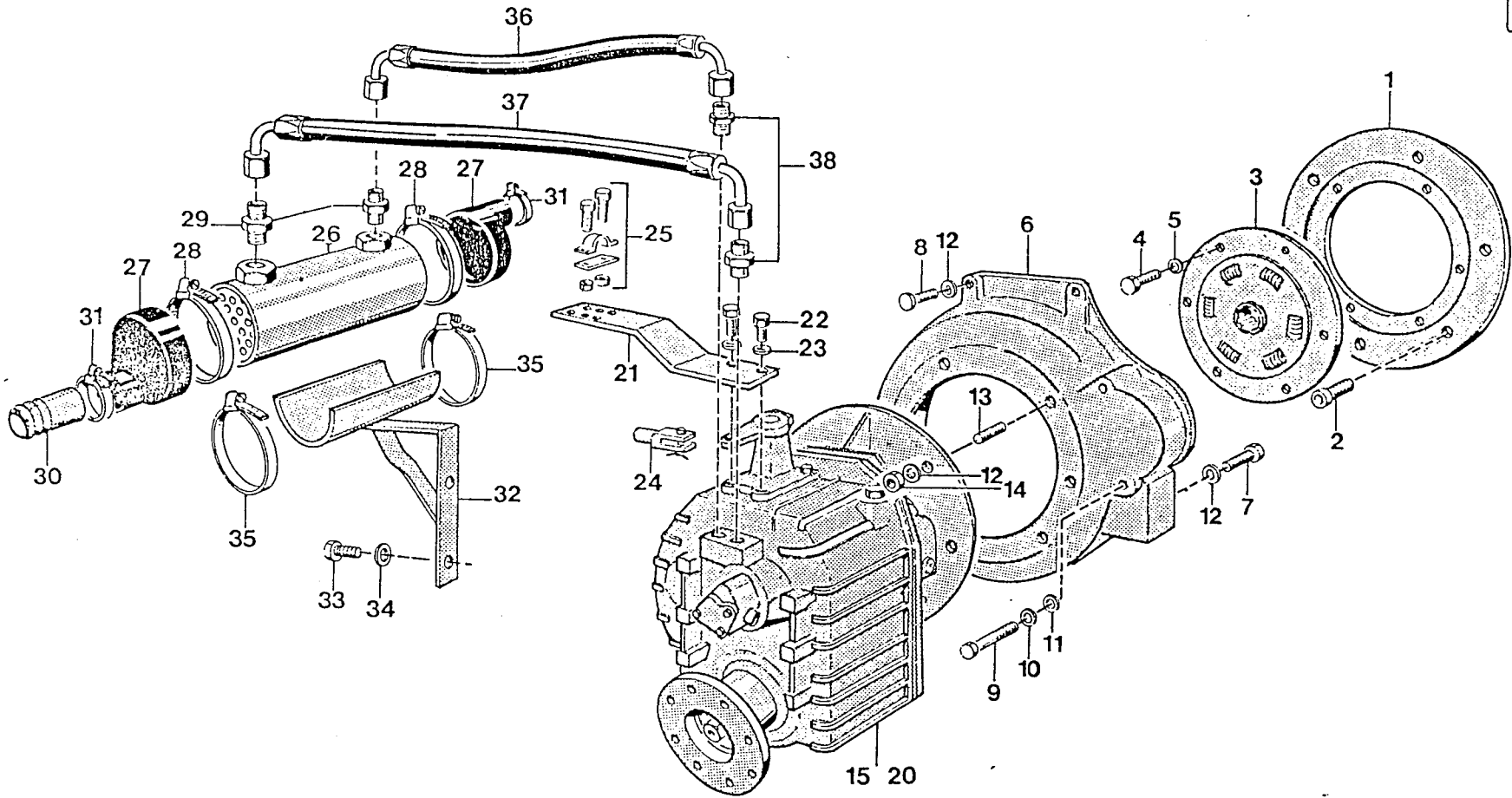
GROUP DESCRIPTION	80.00	PAG.
-------------------	-------	------

FLYWHEEL - HOUSING

800009

81.00

810009



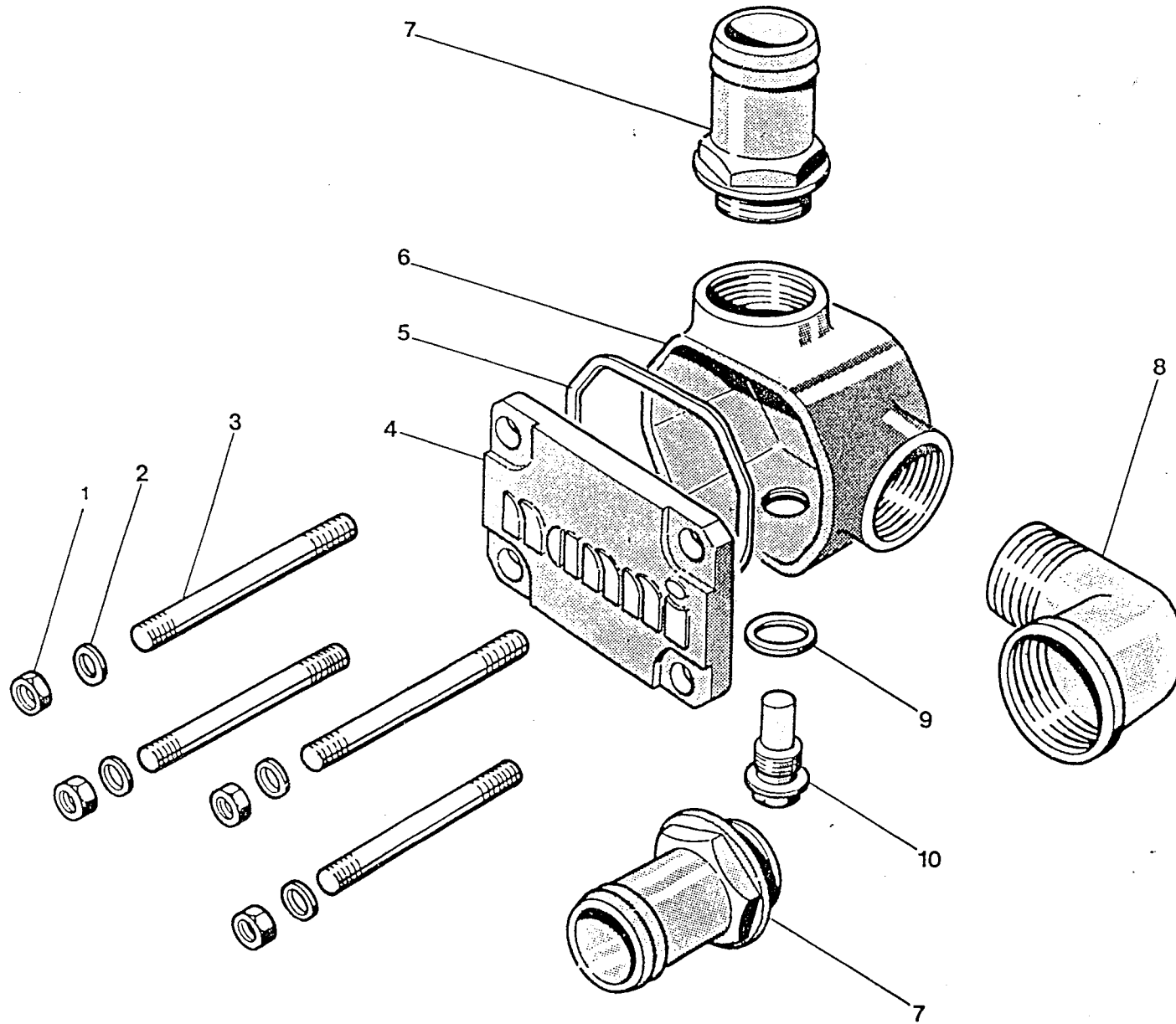
ITEM PART.N	QTY	D E S C R I P T I O N	REMARKS	ITEM PART.N	QTY	D E S C R I P T I O N	REMARKS
1	777060	1	SUPPORT, DAMPERPLATE 4.240-5	!	34	119136	2 WASHER, SPRING D10
2	498003	6	BOLT, SOCK M 8X 25	!	35	634620	2 CLAMP, HOSE 60-80
3	776670	1	DAMPERPLATE	!	36	300472	1 HOSE, OIL L=520 CPL
4	639903	6	BOLT, HEX M 8X 16	!	37	300473	1 HOSE, OIL L=560 CPL
5	119138	6	WASHER, SPRING D 8	!	38	891009	2 NIPPLE, COUPLING MM3/8"X3/8G
6	628002	1	HOUSING, FLYWHEEL 5.300 VELV	!	39	300441	1 OILCOOLER, GEARBOX HBW360 CP 26 ↑ 31
7	639604	3	BOLT, HEX M10X 55	!			
8	579602	2	BOLT, HEX M10X 70	!			
9	635920	2	BOLT, HEX M12X140	!			
10	409154	2	WASHER, SPRING D12	!			
11	409153	2	WASHER, PLAIN D12	!			
12	119137	11	WASHER, CORRUGATED D10	!			
13	300182	6	STUD, M12X 25	!			
14	647606	8	WASHER, CORRUGATED D12	!			
15	777420	1	GEARBOX, HBW360 -1, 58R	!			
16	777300	1	GEARBOX, HBW360 -2, 13R	!			
17	777200	1	GEARBOX, HBW360 -2, 95R	!			
18	777400	1	GEARBOX, HBW360A-1, 65R	!			
19	777320	1	GEARBOX, HBW360A-2, 22R	!			
20	777220	1	GEARBOX, HBW360A-3, 05R	!			
21	832075	1	BRACKET, REMOTE CONTROLE 4.1	!			
22	119141	2	BOLT, HEX M 8X 20	!			
23	119138	2	WASHER, SPRING D 8	!			
24	830123	1	FORK	!			
25	835020	1	BRACKET, AND PLATES CPL.	!			
26	899408	1	COOLER, OIL HBW360	!			
27	899405	2	HOSE, OIL COOLER	!			
28	634620	2	CLAMP, HOSE 60-80	!			
29	785071	2	NIPPLE, REDUCING MM3/8"X1/2"	!			
30	635662	1	HOSE, WATER INTAKE	!			
31	604533	2	CLAMP, HOSE 32-44	!			
32	899411	1	SUPPORT, OIL COOLER HBW360	!			
33	635508	2	BOLT, HEX M10X 25	!			

! ENGINE TYPE !  
! 4.240 !  
! DATE !  
! 24/05/88 !

! GROUP DESCRIPTION 81.00 !  
! GEARBOX OILCOOLER ! 810009 !

81.01

810109





ITEM PART.N QTY D E S C R I P T I O N

REMARKS

ITEM PART.N QTY D E S C R I P T I O N

REMARKS

1 27322 4 NUT,M 8  
2 119139 4 WASHER,CORRUGATED D 8  
3 632004 4 STUD,M 8X 65  
4 632006 1 COVER,OIL COOLER HBW250  
5 632002 1 GASKET,OIL COOLER HBW250  
6 574550 1 HOUSING,OIL COOLER 4.240-5.  
7 892303 2 PILLAR,HOSE 1"  
8 892304 1 FLBOW,1"  
9 300199 1 GASKET,RING D16 (AL)  
10 300214 1 PLUG,HEX M16X1,5

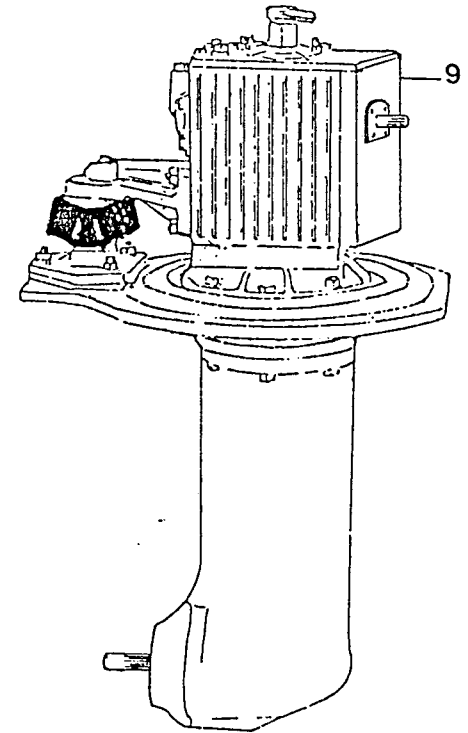
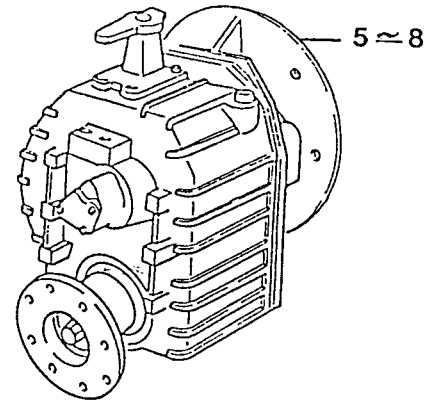
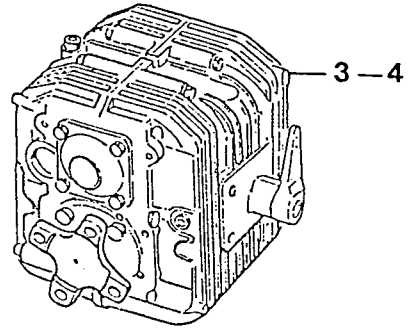
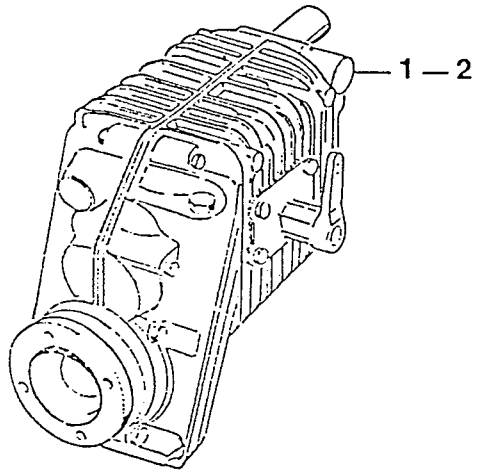
! ENGINE TYPE !  
! 4.240 !

! DATE !  
! 24/05/88 !

! GROUP DESCRIPTION 81.00 !  
! GEARBOX OILCOOLER 810109 !

82.00

820009



ITEM PART.N QTY D E S C R I P T I O N

REMARKS

ITEM PART.N QTY D E S C R I P T I O N

REMARKS

1	776340	1	GEARBOX,HBW150V-2,13R	!
2	776335	1	GEARBOX,HBW150V-2,99R	!
3	777110	1	GEARBOX,HBW250 -1,88R	!
4	777115	1	GEARBOX,HBW250 -2,74R	!
5	777200	1	GEARBOX,HBW360 -2,95R	!
6	777300	1	GEARBOX,HBW360 -2,13R	!
7	777320	1	GEARBOX,HBW360A-2,22R	!
8	777220	1	GEARBOX,HBW360A-3,05R	!
9	778020	1	GEARBOX,SAIL DRIVE-2,4R	!

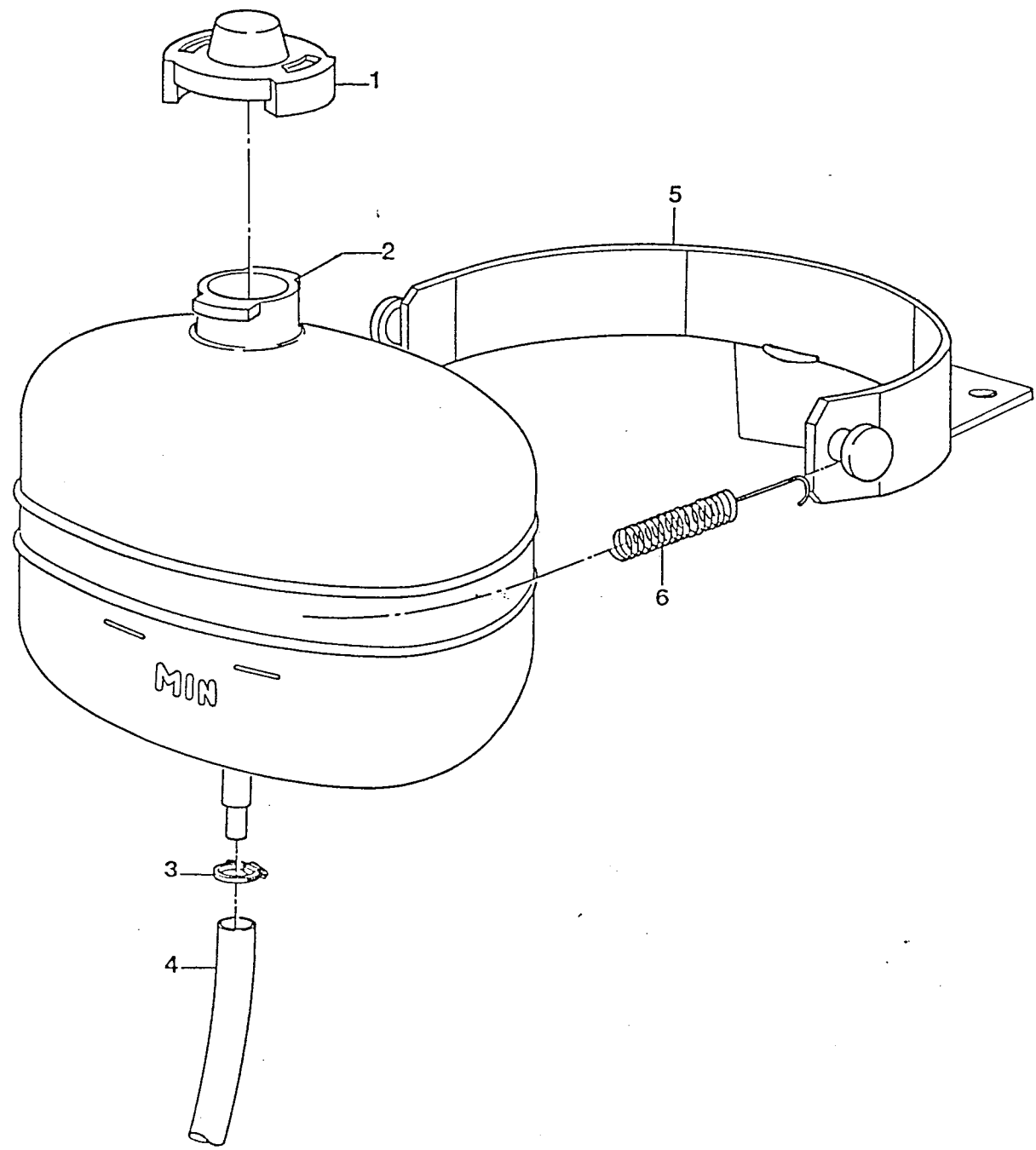
! ENGINE TYPE !  
! 4.240 !

! DATE !  
! 30/05/88 !

! GROUP DESCRIPTION 82.00 ! PAG. !  
! REVERSING GEAR ! 820009 !

89.00

890009



ITEM	PART.N	QTY	D E S C R I P T I O N	REMARKS	ITEM	PART.N	QTY	D E S C R I P T I O N	REMARKS
------	--------	-----	-----------------------	---------	------	--------	-----	-----------------------	---------

1	634561	1	CAP, EXPANSION TANK						
2	634560	1	TANK, EXPANTION 4.180	4.240					
3	300923	2	CLAMP, HOSE 11-13						
4	635522	1	HOSE, D 8 L= 600						
5	635521	1	SUPPORT, EXPANSION TANK 4.240						
6	300083	1	SPRING, EXPANTION TANK						

ENGINE TYPE
-------------

4.240

DATE
------

20/05/88

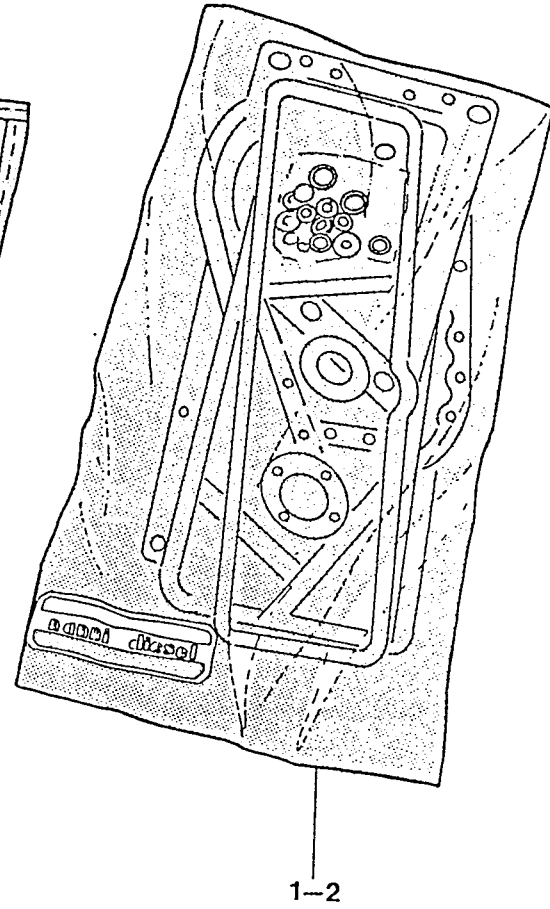
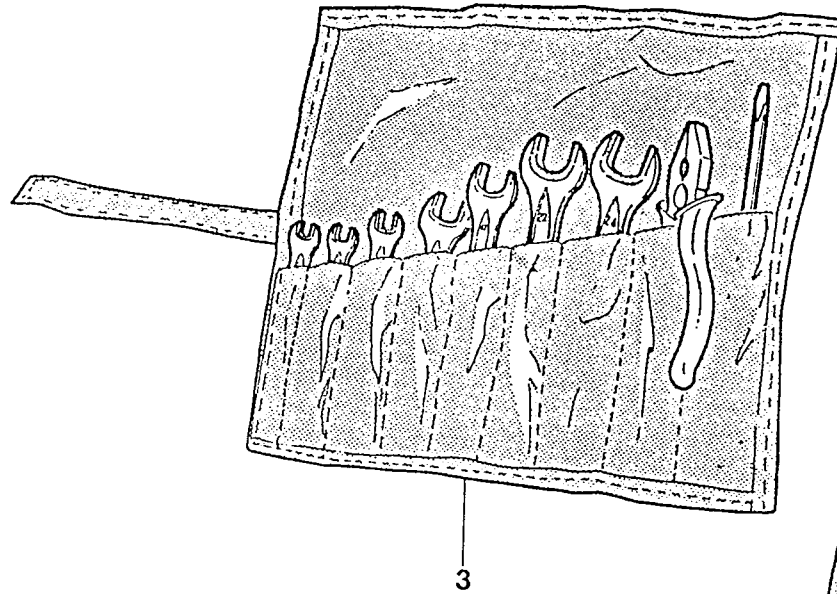
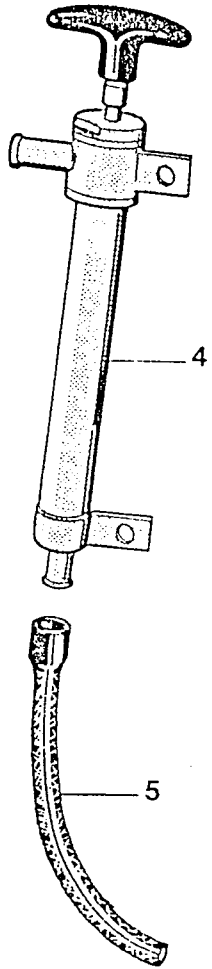
GROUP DESCRIPTION	89.00	PAG.
-------------------	-------	------

WATER TANK

890009

90.00

900009



ITEM PART.N	QTY	D E S C R I P T I O N	REMARKS	ITEM PART.N	QTY	D E S C R I P T I O N	REMARKS
-------------	-----	-----------------------	---------	-------------	-----	-----------------------	---------

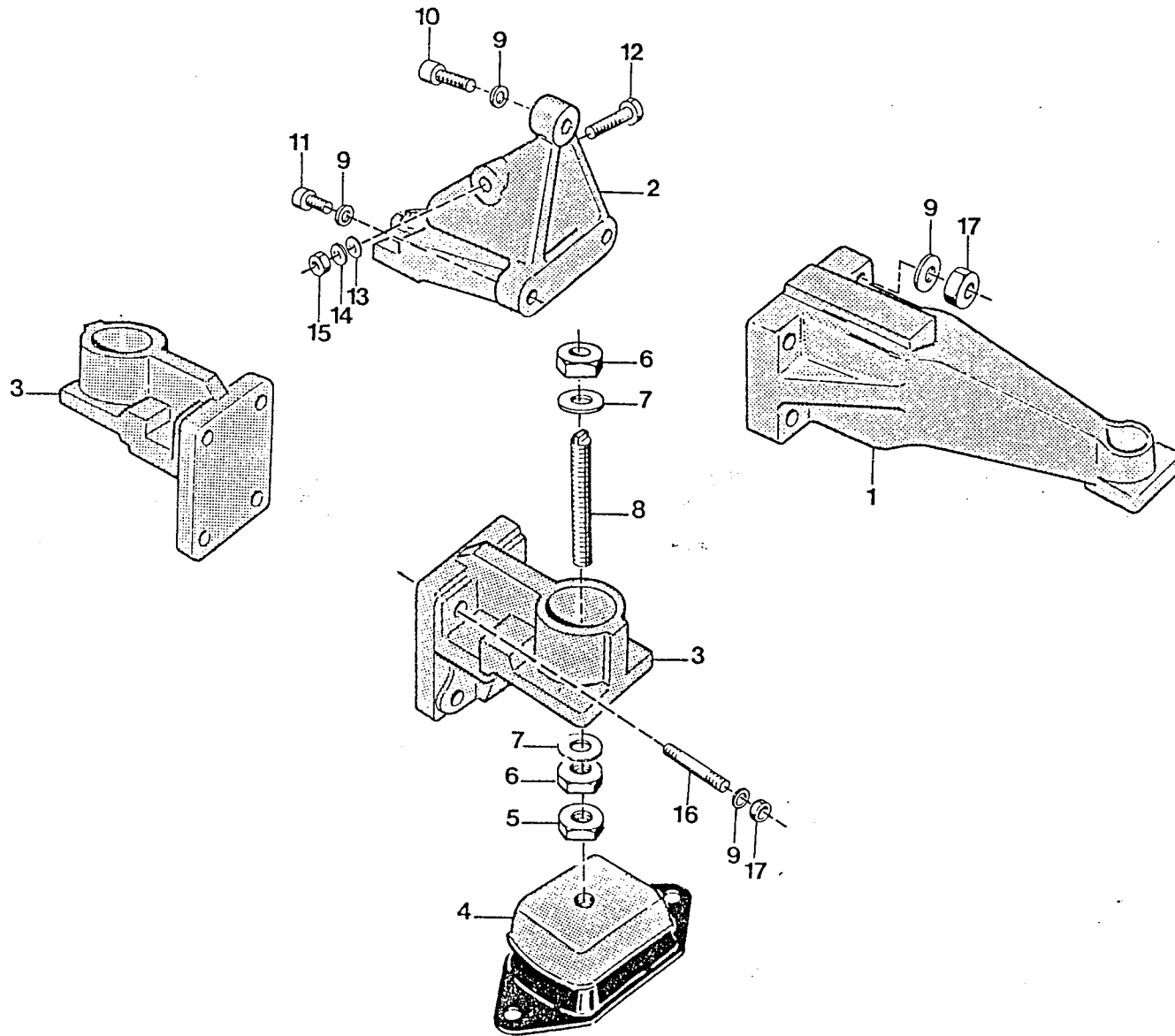
1	639000	1	SET,GASKET CRANKCASE 4.240				
2	639010	1	SET,GASKET CYL.HEAD 4.240				
3	609901	1	KIT,TOOLS				
4	439302	1	PUMP,OIL EXTRACTION				
5	302323	1	HOSE,STEELBELTED D 6 L= 500				

! ENGINE TYPE !	4.240
! DATE !	25/05/88

! GROUP DESCRIPTION	90.00	! PAG. !
! TOOLS GASKET SET		! 900009 !

91.00

910009





ITEM PART.N QTY D E S C R I P T I O N

REMARKS

ITEM PART.N QTY D E S C R I P T I O N

REMARKS

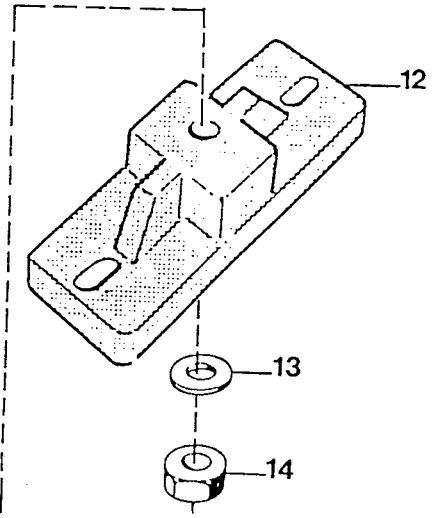
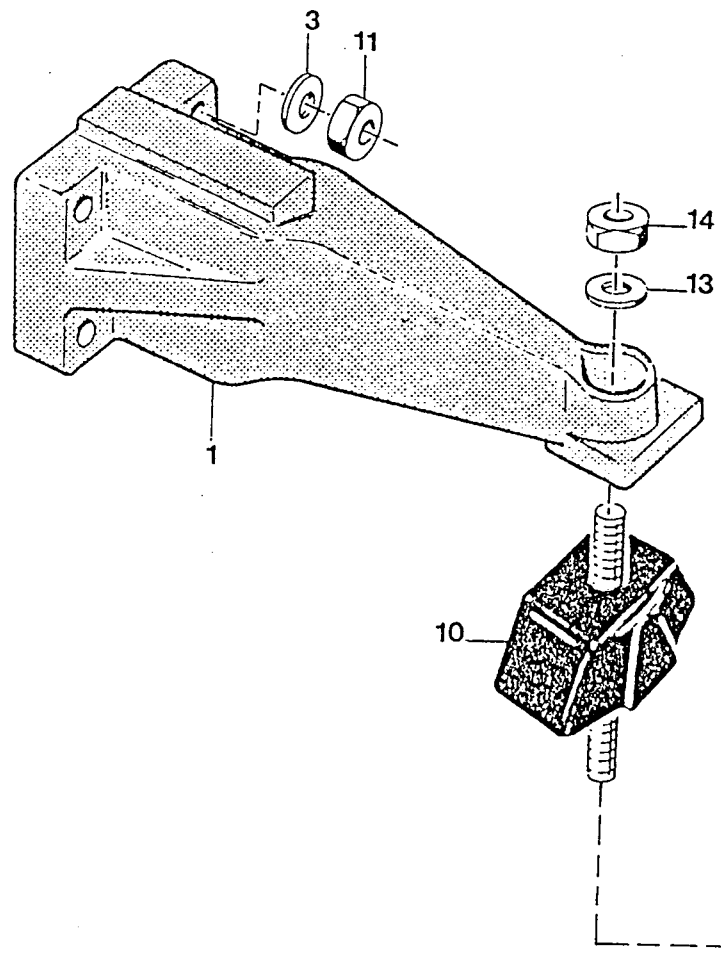
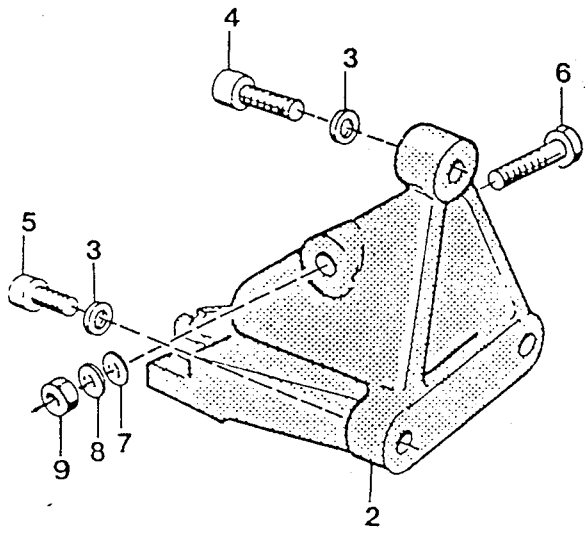
1	639204	1	SUPPORT,ENG. 4.240-5.300/T
2	639205	1	SUPPORT,ENG. 4.240-5.300/T
3	300085	2	SUPPORT,MOUNT
4	300701	4	MOUNT,RUBBER 45 MEDIUM SHR
5	639203	4	NUT,M16 LOW
6	896520	8	NUT,M16
7	649108	12	WASHER,PLAIN D16
8	609116	4	STUD,M16X100
9	119139	11	WASHER,CORRUGATED D 8
10	635916	1	BOLT,SOCK M 8X 35
11	635917	2	BOLT,SOCK M 8X 40
12	635918	1	BOLT,HEX M12X150
13	409153	1	WASHER,PLAIN D12
14	409154	1	WASHER,SPRING D12
15	607318	1	NUT,M12
16	604549	8	STUD,M 8X 25
17	27322	8	NUT,M 8

ENGINE TYPE	4.240
DATE	27/05/88

GROUP DESCRIPTION	91.00	PAG.
ENGINE MOUNT		910009

91.02

910209



ITEM PART.N QTY D E S C R I P T I O N      R E M A R K S

ITEM PART.N QTY D E S C R I P T I O N      R E M A R K S

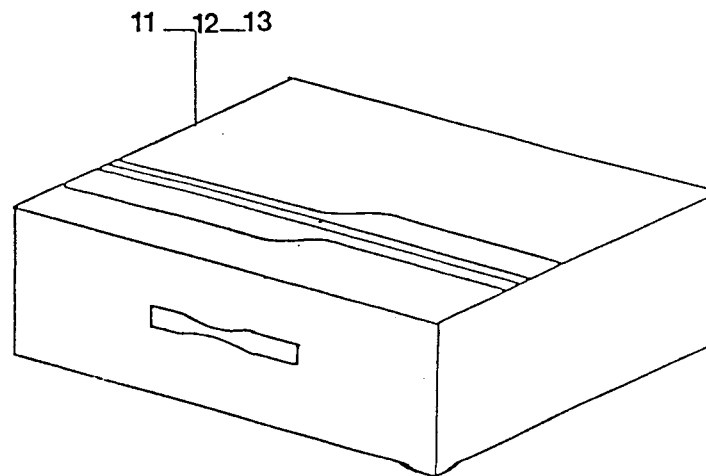
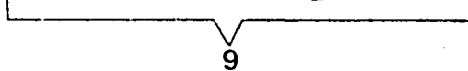
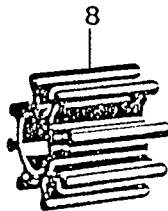
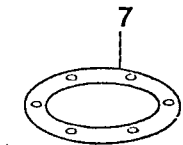
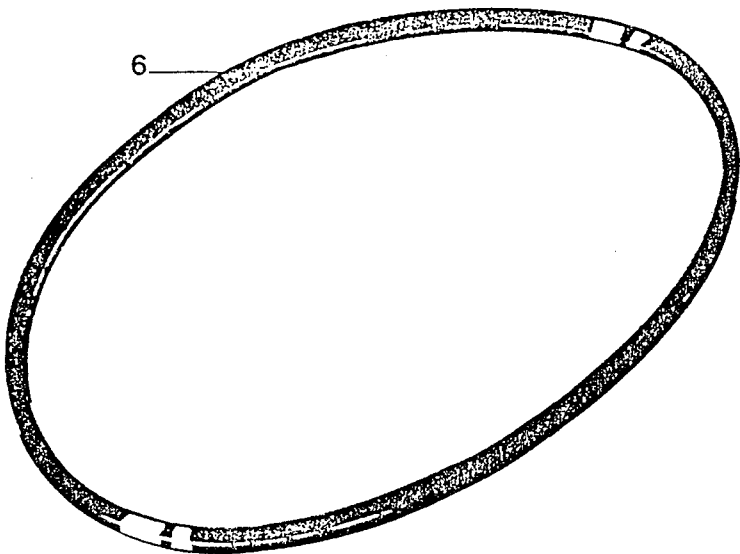
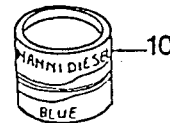
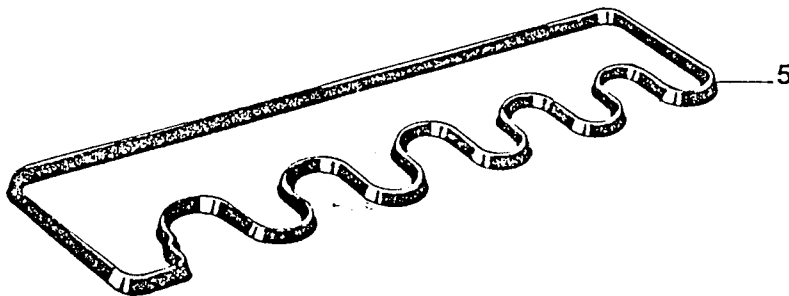
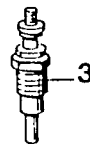
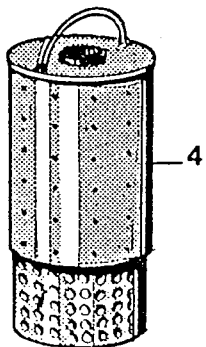
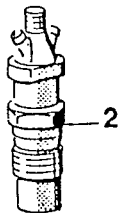
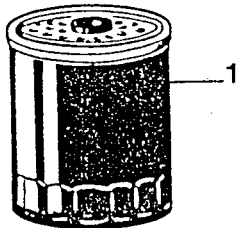
1 635913    1 SUPPORT,ENG.(L) 4.240  
2 635914    1 SUPPORT,ENG.(R) 4.240  
3 119139    3 WASHER,CORRUGATED D 8  
4 635916    1 BOLT,SOCK M 8X 35  
5 635917    2 BOLT,SOCK M 8X 40  
6 635918    1 BOLT,HEX M12X150  
7 409153    1 WASHER,PLAIN D12  
8 409154    1 WASHER,SPRING D12  
9 607318    1 NUT,M12  
10 439105    2 MOUNT,RUBBER 85 FREUDENBERG  
11 27322    3 NUT,M 8  
12 609105    2 FLANGE  
13 119137    8 WASHER,CORRUGATED D10  
14 119143    9 NUT,M10

!    E N G I N E    T Y P E    !  
!    4.240                    !  
!                                    !  
!    D A T E                    !  
!    27/05/88                    !

!    G R O U P   D E S C R I P T I O N    91.02                    !    P A G .    !  
!    E N G I N E   M O U N T   S . D .                    !    910209    !

95.00

950009



14  
1  
2  
13

ITEM PART.N QTY D E S C R I P T I O N      R E M A R K S      I T E M P A R T . N Q T Y D E S C R I P T I O N      R E M A R K S

1 622350 1 FILTER,FUEL  
 2 632153 1 INJECTOR,CPL.4.240-5.300/T  
 3 637120 1 GLOWPLUG,4.240-5.300 < 004957  
 4 612125 1 O-RING  
 5 610955 1 GASKET,COVER CYL:HEAD 4.240  
 6 637398 1 V-BELT,SPA 1015 LA  
 7 614616 1 GASKET,F7B  
 8 544310 1 IMPELLER,WATER PUMP F 7B-80  
 9 544329 1 SET,IMPELLER F7B-9 ITEM 7-8  
 10 301521 1 PAINT,NANNI BLUE 125CC  
 11 301354 1 CASE,SPARE PARTS  
 12 301347 1 INSERT,CASE  
 13 301348 1 INSERT,CASE BOTTOM  
 14 302322 1 CASE,SPARE PARTS CPL.4.240 1 ↑ 13

! ENGINE TYPE !  
 ! 4.240 !  
 ! DATE !  
 ! 25/05/88 !

! GROUP DESCRIPTION 95.00 !  
 ! SPARE PARTS KIT !  
 ! PAG. !  
 ! 950009 !

DESCRIPTION	GROUP NO.	DESCRIPTION	GROUP NO.	DESCRIPTION	GROUP NO.
CRANK CASE/CYLINDERS	01.00	ELECTRIC STOP	76.00		
OIL PAN- OIL PUMP	01.01	FLY-WHEEL HOUSING	80.00		
CYLINDER HEAD COVER	05.00	GEARBOX, OIL COOLER	81.00		
CYLINDER HEAD	09.00	REVERSING GEAR	82.00		
TIMING GEAR - CAMSHAFT	11.00	WATER TANK	89.00		
TIMING GEAR - CAMSHAFT	11.01	TOOLS - GASKET SET	90.00		
SPEED CONTROL	14.00	ENGINE MOUNT	91.00		
CRANKSHAFT PISTONS	15.00	ENGINE MOUNT V.DRIVE	91.01		
INJECTION & FUEL PUMP	21.00	ENGINE MOUNT S.D.	91.02		
INJECTION LINES NOZZLES	22.00	SPARE PARTS KIT	95.00		
FUEL FILTER ASSY.	23.00				
OIL FILTER ASSY.	31.00				
WATER PUMP	40.00				
HEAT EXCHANGER EXH. MANIFOLD	46.00				
SEA WATER PUMP ASSY.	47.00				
SEA WATER PUMP	47.01				
OIL COOLER	49.00				
INTAKE MANIFOLD	51.00				
STARTER MOTOR	70.00				
ALTERNATOR ASSY. STD.	73.00				
INSTRUMENT PANEL LXP.	74.01				
INSTRUMENT PANEL LXP.	75.01				

INDEX	00.00	<b>manmiediesel</b>	GROUP DESCRIPTION	00.00	000009
DATE					